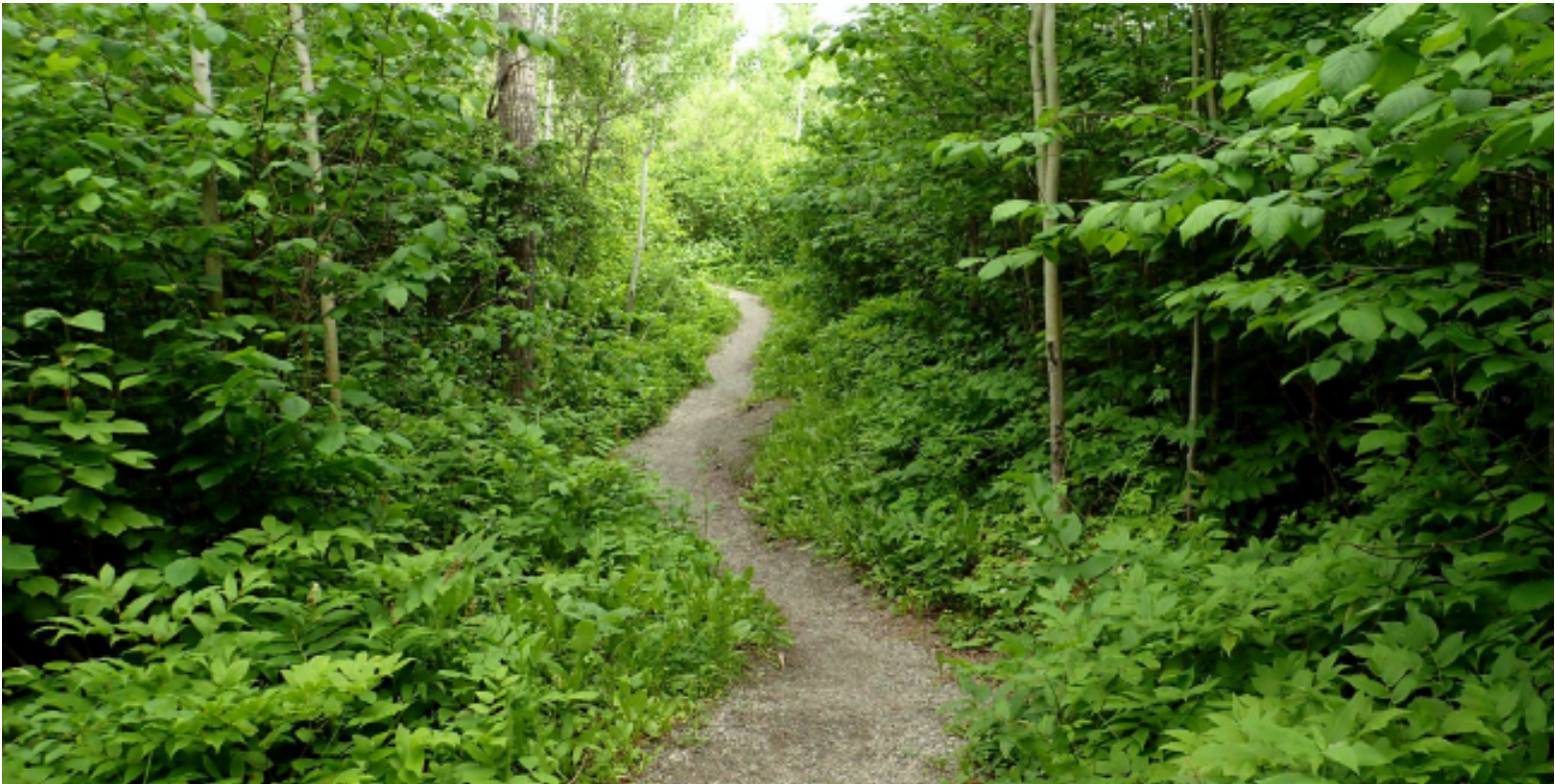


West Fraser Timber Park

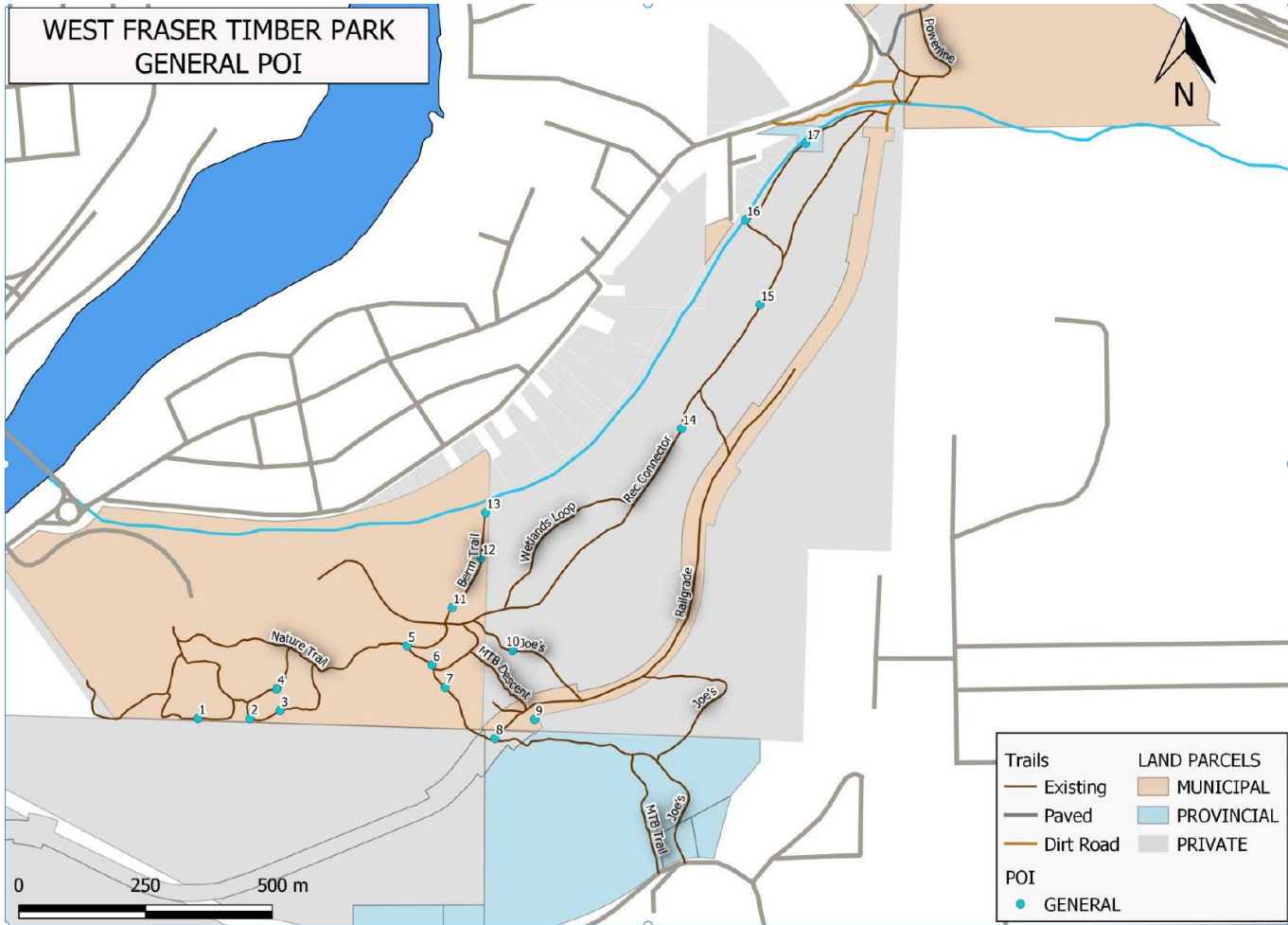
Request for Proposal

Appendix A



GENERAL

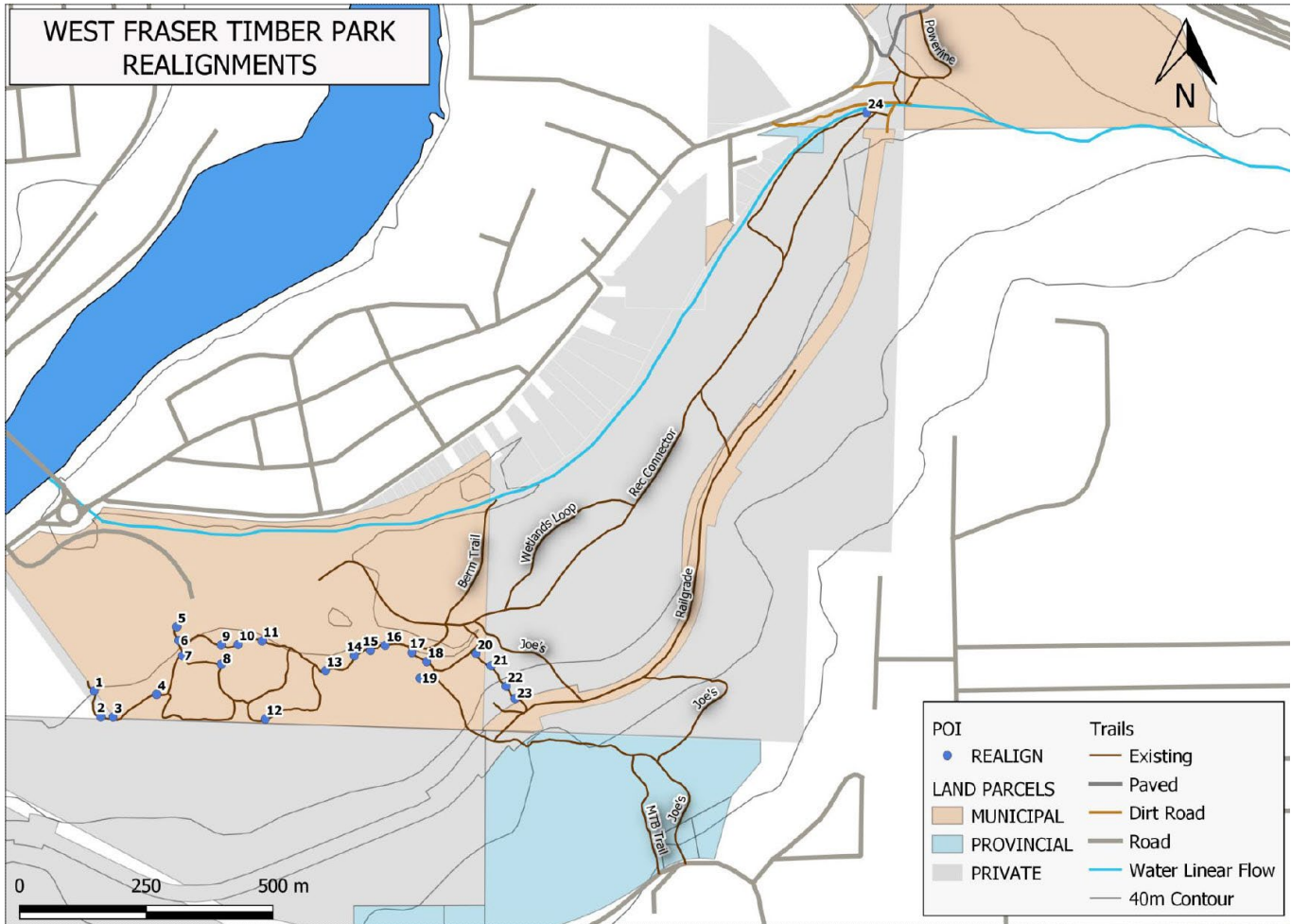
| POI | TYPE | NAME | DESCRIPTION |
|-----|---------|---------------------------|---|
| 1 | GENERAL | Confirm Property Boundary | realign as required |
| 2 | GENERAL | traverse to descent | MTB directional to Nature Trail |
| 3 | GENERAL | 20% 10m | |
| 4 | GENERAL | dh directional | MTB directional descent to Nature Trail |
| 5 | GENERAL | sign existing | |
| 6 | GENERAL | sign existing | |
| 7 | GENERAL | 40% 50m | |
| 8 | GENERAL | saturated railgrade | water trapped by steep banks on either side |
| 9 | GENERAL | moist clay >60% slope | |
| 10 | GENERAL | saturated | |



REALIGNMENTS

| ABBR. | TRAIL |
|-------|----------------------|
| NTA | NATURE TRAIL & AREA |
| RC | REC CONNECTOR |
| BRR | BORREGARD ROAD ROUTE |

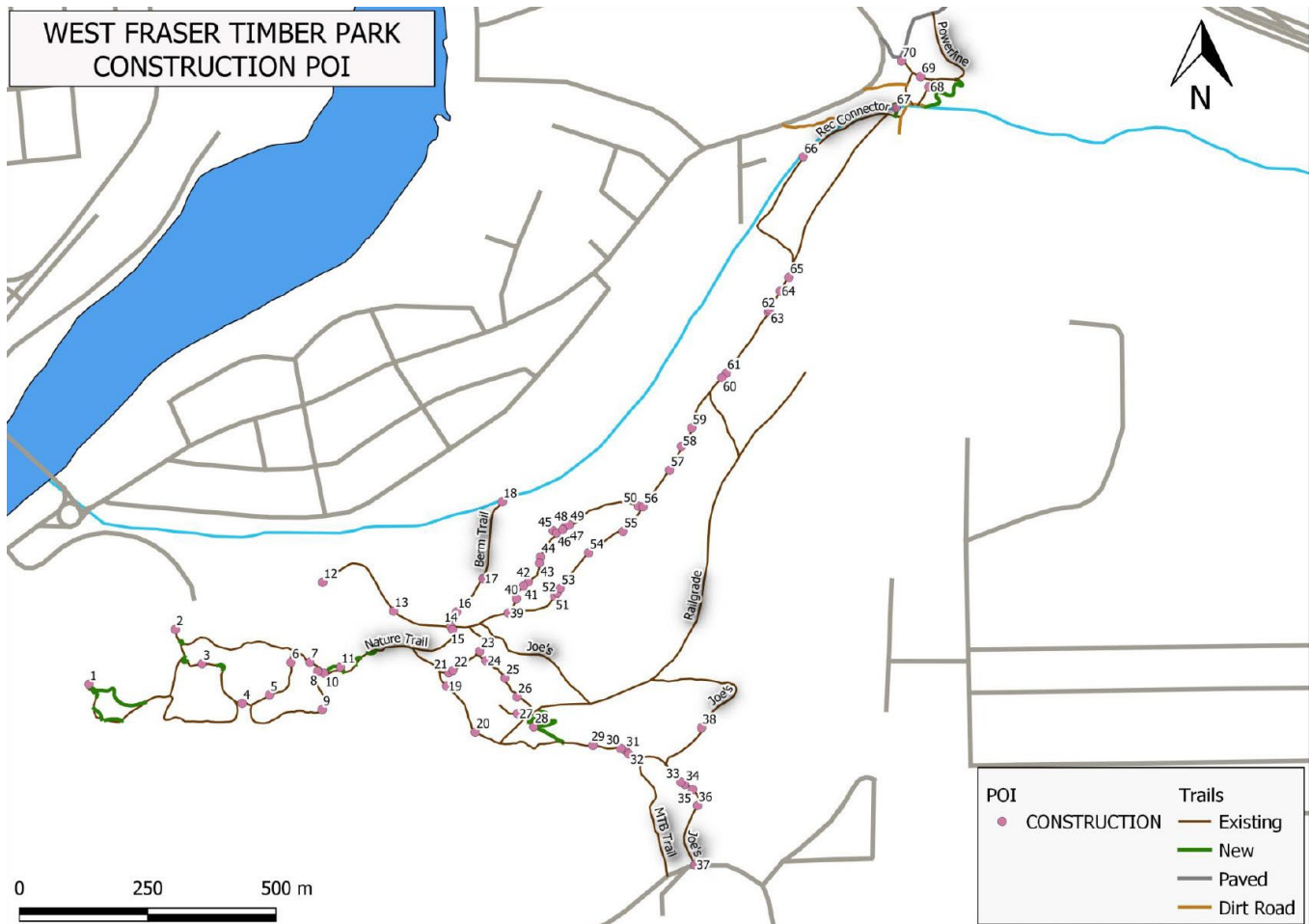
| REALIGNMENTS | | | | | |
|------------------|-------|--------------|------------|--|---|
| POI | TRAIL | NAME | DISTANCE m | DESCRIPTION | NOTE |
| 1 | NTA | realign 40 m | 40 | readjust trail by 7m to stay within property boundary | includes deactivation of old trail - MACHINE CONSTRUCTION |
| 2 | NTA | realign 40m | 40 | realign to stay within property boundary | includes deactivation of old trail - MACHINE CONSTRUCTION |
| 3 | NTA | realign 40m | 40 | stay within property boundaries | includes deactivation of old trail - MACHINE CONSTRUCTION |
| 4 | NTA | realign 10 m | 10 | | includes deactivation of old trail - MACHINE CONSTRUCTION |
| 5 | NTA | realign 20m | 20 | entrance is 20%. 20m reroute required | includes deactivation of old trail - MACHINE CONSTRUCTION |
| 6 | NTA | realign 20m | 20 | 12% 15m. realign 20m to green 5% grade | includes deactivation of old trail - MACHINE CONSTRUCTION |
| 7 | NTA | realign 50 m | 50 | 25% 20 meters. Deactivate original line | includes deactivation of old trail - MACHINE CONSTRUCTION |
| 8 | NTA | realign 25m | 25 | widen Corner, lessen grade | includes deactivation of old trail - MACHINE CONSTRUCTION |
| 9 | NTA | realign 20m | 20 | 20% 10m. realign 20m to 5% | includes deactivation of old trail - MACHINE CONSTRUCTION |
| 10 | NTA | realign 15 m | 15 | | includes deactivation of old trail - MACHINE CONSTRUCTION |
| 11 | NTA | realign 20m | 20 | | includes deactivation of old trail - MACHINE CONSTRUCTION |
| 12 | NTA | realign 15m | 15 | confirm property boundary through survey and realign as required | includes deactivation of old trail - MACHINE CONSTRUCTION |
| 13 | NTA | realign 60m | 60 | 60m. just before Bridge and cross existing trail at steep section after bridge. move trail above bridge, install culvert, remove bridge. | includes deactivation of old trail - MACHINE CONSTRUCTION |
| 14 | NTA | realign 40m | 40 | come out at Bridge | includes deactivation of old trail - MACHINE CONSTRUCTION |
| 15 | NTA | realign 25 m | 25 | lessen grade remove stairs | includes deactivation of old trail - MACHINE CONSTRUCTION |
| 16 | NTA | realign 15m | 15 | | includes deactivation of old trail - MACHINE CONSTRUCTION |
| 17 | NTA | realign 30 m | 30 | | includes deactivation of old trail - MACHINE CONSTRUCTION |
| 18 | NTA | realign 20m | 20 | | includes deactivation of old trail - MACHINE CONSTRUCTION |
| NTA TOTAL | | | | | |
| 20 | BRR | realign 25m | 25 | | includes deactivation of old trail - HAND CONSTRUCTION |
| 21 | BRR | realign 35m | 35 | | includes deactivation of old trail - HAND CONSTRUCTION |
| 22 | BRR | realign 30m | 30 | s turn crossing trail. 1 switchback requires >70cm retainer. decommission existing. major deadhead birch just downtrail from site | includes deactivation of old trail - HAND CONSTRUCTION |
| 23 | BRR | realign 25m | 25 | rehab old line with check dams | includes deactivation of old trail - HAND CONSTRUCTION |
| BRR TOTAL | | | | | |



CONSTRUCTION POI

| ABBR. | TRAIL |
|--------|----------------------|
| NTA | NATURE TRAIL & AREA |
| RC | REC CONNECTOR |
| BT | BERM TRAIL |
| BRR | BORREGARD ROAD ROUTE |
| WL | WETLANDS LOOP |
| DECOMM | DECOMMISSION |

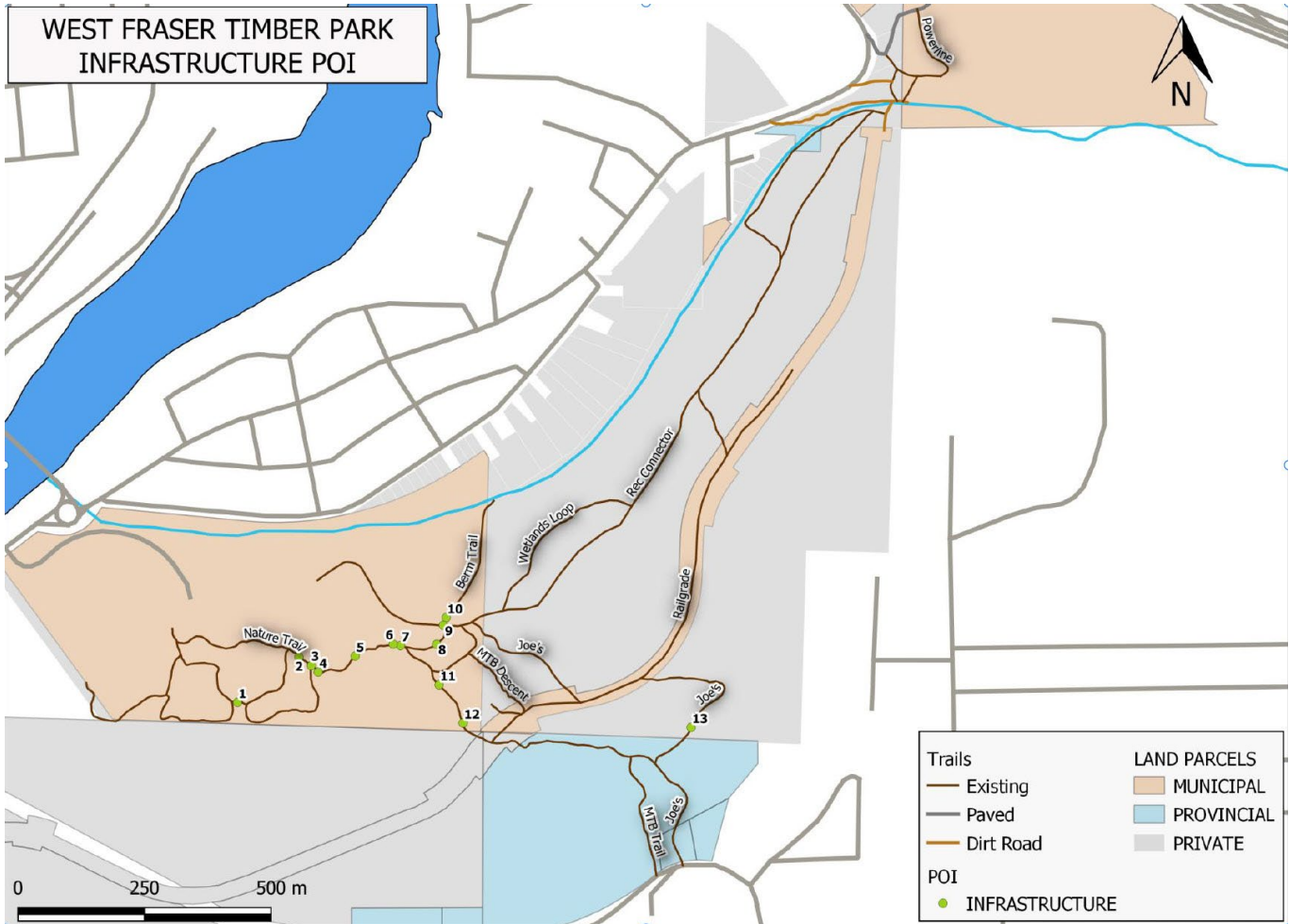
| POI | TRAIL | TYPE | NAME | DESCRIPTION | NOTE |
|------------------|-------|--------------|--------------------------------------|--|---|
| 24 | BRR | CONSTRUCTION | 3 waterbars 2 sets of check steps | check steps 3 steps 1m apart higher, 3 steps 2m apart lower | |
| 25 | BRR | CONSTRUCTION | 3 waterbars 3 check steps | check steps 1m apart x 4 | |
| 26 | BRR | CONSTRUCTION | waterbar | | |
| 28 | BRR | CONSTRUCTION | switchback | requires log retainer >50cm h on low side | |
| 29 | BRR | CONSTRUCTION | check steps | 6 steps 2m apart. 32% 10m | |
| 30 | BRR | CONSTRUCTION | turnpike 5m | | fair distance to site |
| 31 | BRR | CONSTRUCTION | check steps | 3 steps 1m apart | |
| 32 | BRR | CONSTRUCTION | check steps | 3 steps 60cm apart | |
| 33 | BRR | CONSTRUCTION | waterbars | 17% 20m. cap and waterbars every 5m | |
| 34 | BRR | CONSTRUCTION | waterbar x 2 | | |
| 35 | BRR | CONSTRUCTION | grade reversal or waterbar | requires ditch to catch and divert run off from above. | |
| 36 | BRR | CONSTRUCTION | water bars | 20% 25m. crown cap and install waterbars every 5m with ditching. | |
| 37 | BRR | CONSTRUCTION | staging | back fill 2m h x 10m l with large rock retainer. kiosk and staging infrastructure. steps from landing to trail. | |
| BRR TOTAL | | | | | |
| 1 | NTA | CONSTRUCTION | exit | Trail empties behind ball diamond. Deactivate 40m and create loop with new trail construction | |
| 2 | NTA | CONSTRUCTION | staging | formalize staging area. kiosk | Price will vary on design |
| 3 | NTA | CONSTRUCTION | turnpike 5m | | |
| 4 | NTA | CONSTRUCTION | bridge replace | 4m l. rebuild to standard with handrails | |
| 5 | NTA | CONSTRUCTION | raised tread 15m | water trap. Elevate tread 50cm and create drainage | |
| 6 | NTA | CONSTRUCTION | boardwalk 50 m | swamp with flowing water | Determine feasibility of this trail - other option is to reroute or deactivate. |
| 7 | NTA | CONSTRUCTION | 5m raised tread or turnpike required | saturated 5 m. construct 5m raised tread or turnpike with 150mmculvert | based on turnpike with culvert |
| 8 | NTA | CONSTRUCTION | Turnpike or boardwalk 15m | saturated and Swampy exit onto Nature trail. flowing water needs re directed with ditching and culverts as required. | based on turnpike with culvert |
| 9 | NTA | CONSTRUCTION | turnpike 15 m | swampy saturated | |
| 10 | NTA | CONSTRUCTION | bridge replace | 1.2m w x 3.5m l. good condition. small seep zone. realign and replace with culvert 150mm | based on culvert installation and bridge removal |
| 11 | NTA | CONSTRUCTION | Bridge 2m or culvert required | on reroute over small draw. culvert 200mm or 2m bridge | based on culvert installation |
| 15 | NTA | CONSTRUCTION | turnpike 7m | low lying area requires turnpike 7m | |
| 21 | NTA | CONSTRUCTION | deactivate 15m | 45% 10m. deactivate and naturalize steep section with rustic stairs. formalize bypass and cap. | see TREAD CAPPING for capping costs |
| 22 | NTA | CONSTRUCTION | widen bench | widen and cap with gravel. short section is very slippery and narrow above steep bank | 5m section - very slippery with fall exposure |
| 23 | NTA | CONSTRUCTION | waterbar | | |
| NTA TOTAL | | | | | |



EXISTING INFRASTRUCTURE

| POI | NAME | TYPE | STATUS | DESCRIPTION |
|-----|------------------|----------------|---------|--|
| 1 | bridge | INFRASTRUCTURE | Replace | 4m l. replace - not built to standard. |
| 2 | bridge | INFRASTRUCTURE | Monitor | 1.22m w x 4.5m l. good condition. ephemeral <1w |
| 3 | bridge | INFRASTRUCTURE | Monitor | 1.2m w x 2m l. good condition. small rill <1 m. replace with culvert as a future option when bridge expires |
| 4 | bridge replace | INFRASTRUCTURE | Replace | replace with 150mm culvert after realignment |
| 5 | bridge | INFRASTRUCTURE | Monitor | 1.2m w x 3.5m l. good condition. small ephemeral flow <1m |
| 6 | viewing platform | INFRASTRUCTURE | Monitor | |
| 7 | bridge | INFRASTRUCTURE | Monitor | 1.2m w x 4.5m l. good condition |
| 8 | bridge | INFRASTRUCTURE | Monitor | 1.2m w x 4.5m l. good condition. |
| 9 | boardwalk | INFRASTRUCTURE | Replace | 2m w x 10m l. Replace boardwalk. Opportunity to replace with raised tread 1m h x 2m w and 3 metal culverts 400mm diameter to allow machine passage or replace/repair boardwalk |

NOTE: All rebuilds recommended are included in CONSTRUCTION POI



TREAD PRESCRIPTIONS

| EXISTING TRAILS, NEW TRAILS, REALIGNMENTS | | | |
|---|--------------|--------------|---|
| TRAIL | DISTANCE (m) | PRESCRIPTION | DESCRIPTION |
| NATURE TRAIL & AREA | 2557.5 | WTS TYPE II | Surface with compacted crusher fines to a depth of no less than 10cm Surfaced single track width of no less than 1m Remove all embedded trail obstacles Clear width to 1.6m and height to 2.4m |
| BORREGARD RD ROUTE | 1127 | WTS TYPE II | Surface with compacted crusher fines to a depth of no less than 10cm Surfaced single track width of no less than 1m Remove all embedded trail obstacles Clear width to 1.6m and height to 2.4m |