

Q-KIDS DAYCARE CENTRE

420 Webster Avenue
Quesnel, BC, V2J 1A5

9		
8		
7		
6	ISSUED FOR BUILDING PERMIT AND TENDER ONLY	JUN 15/22
5	ISSUED FOR PRE-TENDER REVIEW ONLY	JUN 10/22
4	ISSUED FOR COORDINATION WITH UTILITIES R3	JUN 08/22
3	ISSUED FOR REVIEW	SEP 29/21
2	ISSUED FOR COORDINATION WITH UTILITIES	AUG 26/21
1	ISSUED FOR COORDINATION	JUL 26/21
NO.	REVISIONS	DATE

ELECTRICAL CONSULTANT:



HARBOURFRONT BUSINESS CENTRE
SUITE 500 - 224 WEST ESPLANADE
NORTH VANCOUVER, BC, V7M 1A4
778.997.5175 <https://alegowest.ca>

THIS DRAWING AND ALL ASSOCIATED DOCUMENTS ARE AN INSTRUMENT OF SERVICE. AT ALL TIMES, REMAIN THE EXCLUSIVE PROPERTY OF ALEGO WEST AND MAY NOT BE USED OR REPRODUCED FOR ANY REASON WITHOUT THE WRITTEN CONSENT OF ALEGO WEST. COPYRIGHT OF THIS DRAWING, ITS CONTENT AND DESIGN ARE RESERVED BY ALEGO WEST. ANY USE OF THIS DRAWING, RELIANCE ON THE DRAWING, OR DECISIONS BASED UPON THE DRAWING, BY THIRD PARTY ARE THE RESPONSIBILITY OF THOSE THIRD PARTIES UNLESS AUTHORIZED BY ALEGO WEST. THE CITY OF QUESNEL HAS COPYRIGHT PERMISSION FOR REPRODUCTION AND DISTRIBUTION OF THIS DRAWING. DO NOT SCALE THIS DRAWING.

LIGHTING LEGEND	
	2'x4' RECESSED LED LUMINAIRE
	2'x2' RECESSED LED LUMINAIRE
	2'x4' SURFACE MOUNTED LED LUMINAIRE
	1'x4' LED WRAP LUMINAIRE
	4' LED STRIP LUMINAIRE
	LED WALL MOUNTED LUMINAIRE
	LED SURFACE MOUNTED LUMINAIRE
	LED RECESSED LUMINAIRE
	'RUNNING MAN' EXIT SIGN WALL MOUNTED DS - DOUBLE SIDED
	'RUNNING MAN' EXIT SIGN CEILING MOUNTED WITH ARROW INDICATE DIRECTION, DS - DOUBLE SIDED
	EMERGENCY LIGHT UNIT WITH TWO REMOTE LAMPS, # - EMERGENCY LIGHT UNIT NUMBER
	TWO REMOTE EMERGENCY LIGHTS CEILING MOUNTED
	TWO REMOTE EMERGENCY LIGHTS WALL MOUNTED
	EMERGENCY LIGHT ZONE SENSING BOX
	EMERGENCY LIGHT ZONE SENSING PANEL BY MANUFACTURER
	PHOTO CELL
	SINGLE POLE SWITCH
	THREE-WAY SWITCH
	SWITCH 'a' CONTROLS LUMINAIRE 'a'
	WALL VACANCY SENSOR SWITCH WITH DIMMER
	DIMMER SWITCH
	DAYLIGHT HARVESTING SENSOR
	LOW VOLTAGE MASTER SWITCH
	VACANCY SENSOR SWITCH
	TRACK LIGHT WITH LIGHT HEADS
	TIMER SWITCH LEVITON LTB12-1L OR EQUAL (8-12 HRS)
	PIR OCCUPANCY SENSOR CEILING MOUNTED
	PIR VACANCY SENSOR CEILING MOUNTED
	POLE MOUNTED LED LUMINAIRE

POWER LEGEND	
	SINGLE PHASE JUNCTION BOX
	SINGLE OR MULTIPLE PHASE JUNCTION BOX
	DUPLEX RECEPTACLE
	HOUSEKEEPING DUPLEX RECEPTACLE NEMA 5-20R
	GROUND FAULT DUPLEX RECEPTACLE NEMA 5-20R
	DIRECT HARDWIRED CONNECTION TO DEVICE
	MODULAR RACK POLE C/W POWER/COMMUNICATIONS OUTLETS, BACK BOXES, COVER PLATES, ETC. AS REQUIRED.
	PANELBOARD
	MISCELLANEOUS CABINET
	MOTOR
	NON-FUSED DISCONNECT SWITCH
	FUSED DISCONNECT SWITCH
	WIREMOLD RACEWAY
	RANGE RECEPTACLE NEMA 14-50R 50A
	DRYER RECEPTACLE NEMA 14-30R 30A
	ELECTRIC FORCE FLOW HEATER
	DOOR OPERATOR PUSHBUTTON

ABBREVIATION LEGEND	
C	DENOTES DEVICE MOUNTED IN CEILING SPACE
WP	WEATHER PROOF
+18"	18" ABOVE FINISHED FLOOR
MW	MICROWAVE
FR	FRIDGE
HD	HAND DRYER
DW	DISHWASHER

FIRE ALARM LEGEND	
	FIRE ALARM MANUAL STATION
	FIRE ALARM BELL
	FIRE ALARM HORN / BUZZER
	FIRE ALARM COMBINATION HORN/STROBE
	FIRE ALARM STROBE LIGHT WALL MOUNTED
	SMOKE DETECTOR
	THERMAL DETECTOR - RATE OF RISE
	THERMAL DETECTOR - FIXED TEMPERATURE
	FIRE ALARM CONTROL PANEL
	FIRE ALARM REMOTE ANNUNCIATOR
	FIRE ALARM END-OF-LINE DEVICE
	FIRE ALARM DIGITAL DUAL COMMUNICATION TRANSMITTING UNIT
	MAGNETIC DOOR HOLDER
	JUNCTION BOX FOR FIRE ALARM SYSTEM
	FIRE ALARM FAULT ISOLATION MODULE
	FIRE ALARM RELAY CONTROL MODULE
	FIRE ALARM INPUT MONITOR MODULE
	FIRE ALARM LIGHTNING ARRESTER
	SMOKE DETECTOR - DUCT TYPE
	FIRE ALARM BEAM SMOKE DETECTOR
	REFLECTOR FOR FIRE ALARM BEAM SMOKE DETECTOR
	SPRINKLER TAMPER SWITCH
	SPRINKLER PRESSURE SWITCH
	SPRINKLER FLOW SWITCH
	FIRE ALARM REMOTE LED INDICATION POINT
	COMBINED SMOKE AND CARBON MONOXIDE DETECTOR
	COMBINED SMOKE AND CARBON MONOXIDE DETECTOR WITH SOUNDER BASE

CCTV & SECURITY LEGEND	
	KEYPAD
	WINDOW / DOOR CONCEALED CONTACT
	P.I.R. REQUEST TO EXIT
	REQUEST TO EXIT PUSHBUTTON
	PROX. CARD READER
	ELECTRIC DOOR STRIKE
	MAGLOCK
	P.I.R. MOTION SENSOR 360-DEGREE, D59370 OR EQUAL
	P.I.R. MOTION SENSOR 180-DEGREE
	P.I.R. MOTION SENSOR 90-DEGREE, ISC-CDL1-WA12G, -WA-15G, -W15G OR EQUAL
	INTRUSION ALARM CONTROL PANEL
	INTRUSION ALARM ARMING STATION
	INTRUSION ALARM SIREN
	EMERGENCY MANUAL STATION
	SECURITY AND/OR ACCESS CONTROL JUNCTION BOX
	VIDEO INTERCOM
	VIDEO INTERCOM MASTER STATION
	CCTV CAMERA OUTLET, C/W BACK BOX AND CAT 6 DROP (R/I) - ROUGH-IN ONLY.
	NETWORK VIDEO RECORDER
	MANAGED SWITCH
	CAT6 DATA LINE LIGHTNING SURGE PROTECTOR
	POE INJECTOR

COMMUNICATIONS LEGEND	
	TELEVISION OUTLET - WALL MOUNTED
	WIRELESS ACCESS POINT OUTLET - CEILING MOUNTED, # INDICATES CAT.6 DROP QTY
	COMPUTER OUTLET - WALL MOUNTED, # INDICATES CAT.6 DROP QTY
	TELEPHONE OUTLET - WALL MOUNTED, C/W CAT.6 DROP
	DATA CABLING PULL BOX
	COMM. TRAY

ELECTRICAL DRAWING LIST	
E0.0	SYMBOL LEGENDS AND DRAWING LIST
E0.1	PROPOSED SITE PLAN
E0.2	SINGLE LINE DIAGRAM AND SERVICE DETAILS
E0.3	SERVICE PROFILE
E0.4	SITE PLAN EXTERIOR WORK
E1.0	BASEMENT POWER AND LIGHTING PLAN
E2.0	POWER PLAN
E2.1	LUMINAIRE SCHEDULE AND DETAILS
E2.2	MECHANICAL AND PANEL SCHEDULES
E2.3	DETAILS
E2.4	FIRE ALARM RISER
E3.0	REFLECTED CEILING PLAN
E4.0	SECURITY PLAN
E5.0	ELECTRICAL SPECIFICATIONS

PROJECT LEGAL DESCRIPTION	
LOT: 1	
BLOCK: 1	
PLAN: PGP6719 DL 704 CARIBOO DISTRICT	
PID: 013-492-900	

PROJECT:

Q-KIDS DAYCARE CENTRE

420 Webster Avenue
Quesnel, BC

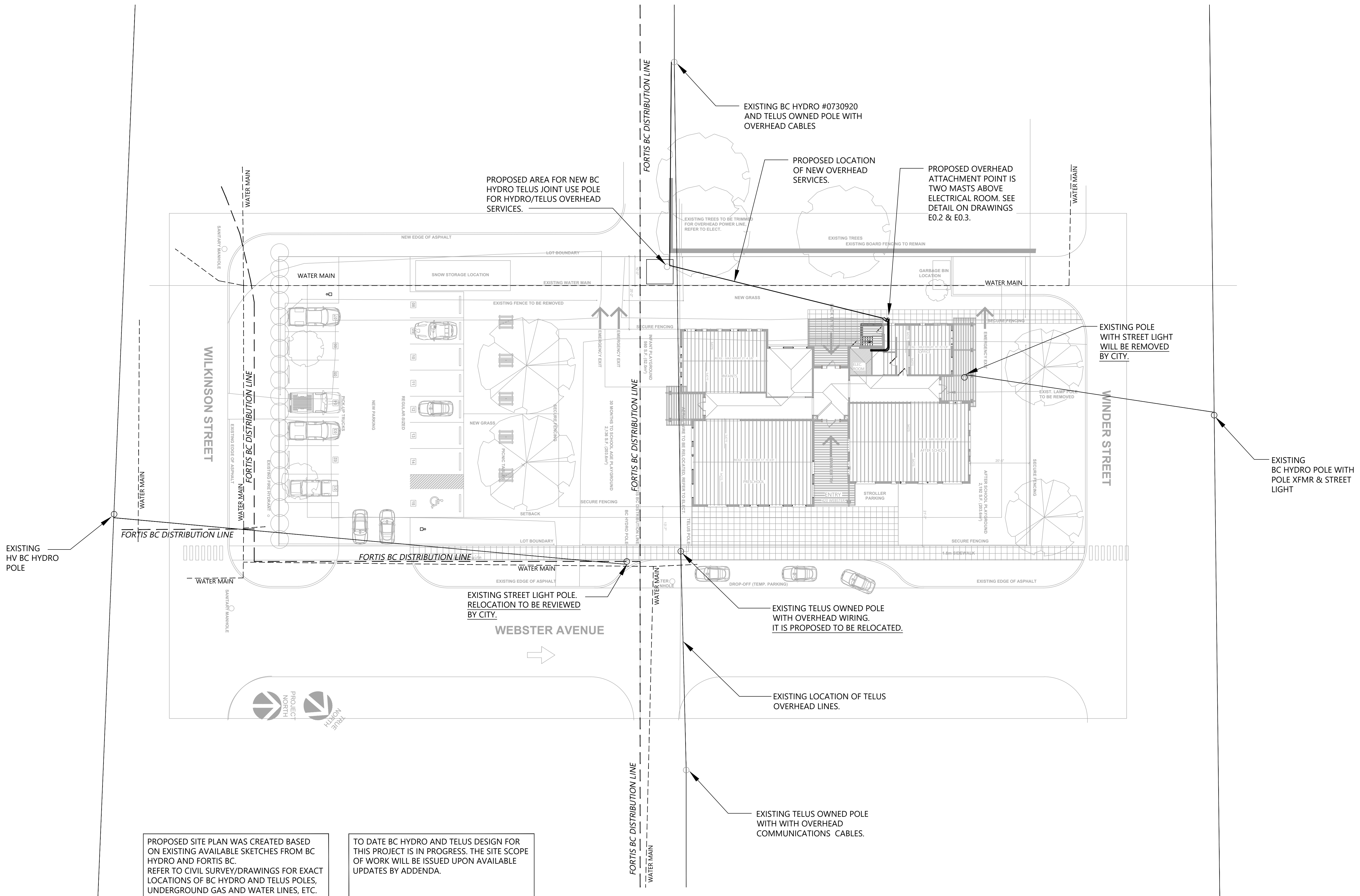
DRAWING:

SYMBOL LEGENDS AND DRAWING LIST

PROJECT NO.:	2108	CHECKED BY:	A.G.
DATE:	JULY 26, 2021	SCALE:	N.T.S.

DRAWING NO.:

E0.0



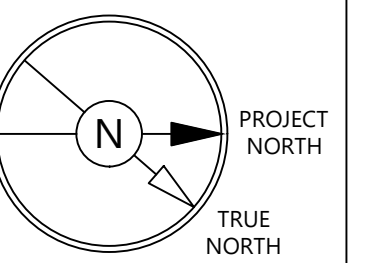
9		
8	ISSUED FOR BUILDING PERMIT AND TENDER ONLY	JUN 15/22
7	ISSUED FOR PRE-TENDER REVIEW ONLY	JUN 10/22
6	ISSUED FOR COORDINATION WITH UTILITIES R3	JUN 08/22
5	ISSUED FOR COORDINATION WITH UTILITIES REV.2	NOV 02/21
4	ISSUED FOR REVIEW	SEP 29/21
3	ISSUED FOR COORDINATION WITH UTILITIES REV.1	SEP 28/21
2	ISSUED FOR COORDINATION WITH UTILITIES	AUG 26/21
1	ISSUED FOR COORDINATION	JUL 26/21
NO.	REVISIONS	DATE

ELECTRICAL CONSULTANT:



HARBOURFRONT BUSINESS CENTRE
SUITE 500 - 224 WEST ESPLANADE
NORTH VANCOUVER, BC, V7M 1A4
778.997.5175 <https://alegowest.ca>

THIS DRAWING AND ALL ASSOCIATED DOCUMENTS ARE AN INSTRUMENT OF SERVICE. ALL RIGHTS REMAIN EXCLUSIVE PROPERTY OF ALEGO WEST AND MAY NOT BE USED OR REPRODUCED FOR ANY REASON WITHOUT THE WRITTEN PERMISSION OF ALEGO WEST.
COPYRIGHT OF THIS DRAWING, ITS CONTENT AND DESIGN ARE RESERVED BY ALEGO WEST. ANY USE OF THIS DRAWING, RELIANCE ON THE DRAWING, OR RECORDING BASED UPON THE DRAWING, BY THIRD PARTY ARE THE RESPONSIBILITY OF THOSE THIRD PARTIES UNLESS AUTHORIZED BY ALEGO WEST. THE CITY OF QUESNEL HAS GRANTED PERMISSION FOR REPRODUCTION AND DISTRIBUTION OF THIS DRAWING. DO NOT SCALE THIS DRAWING.



PROJECT:

Q-KIDS DAYCARE CENTRE

420 Webster Avenue
Quesnel, BC

DRAWING:

PROPOSED SITE PLAN

PROPOSED SITE PLAN WAS CREATED BASED ON EXISTING AVAILABLE SKETCHES FROM BC HYDRO AND FORTIS BC. REFER TO CIVIL SURVEY/DRAWINGS FOR EXACT LOCATIONS OF BC HYDRO AND TELUS POLES, UNDERGROUND GAS AND WATER LINES, ETC.

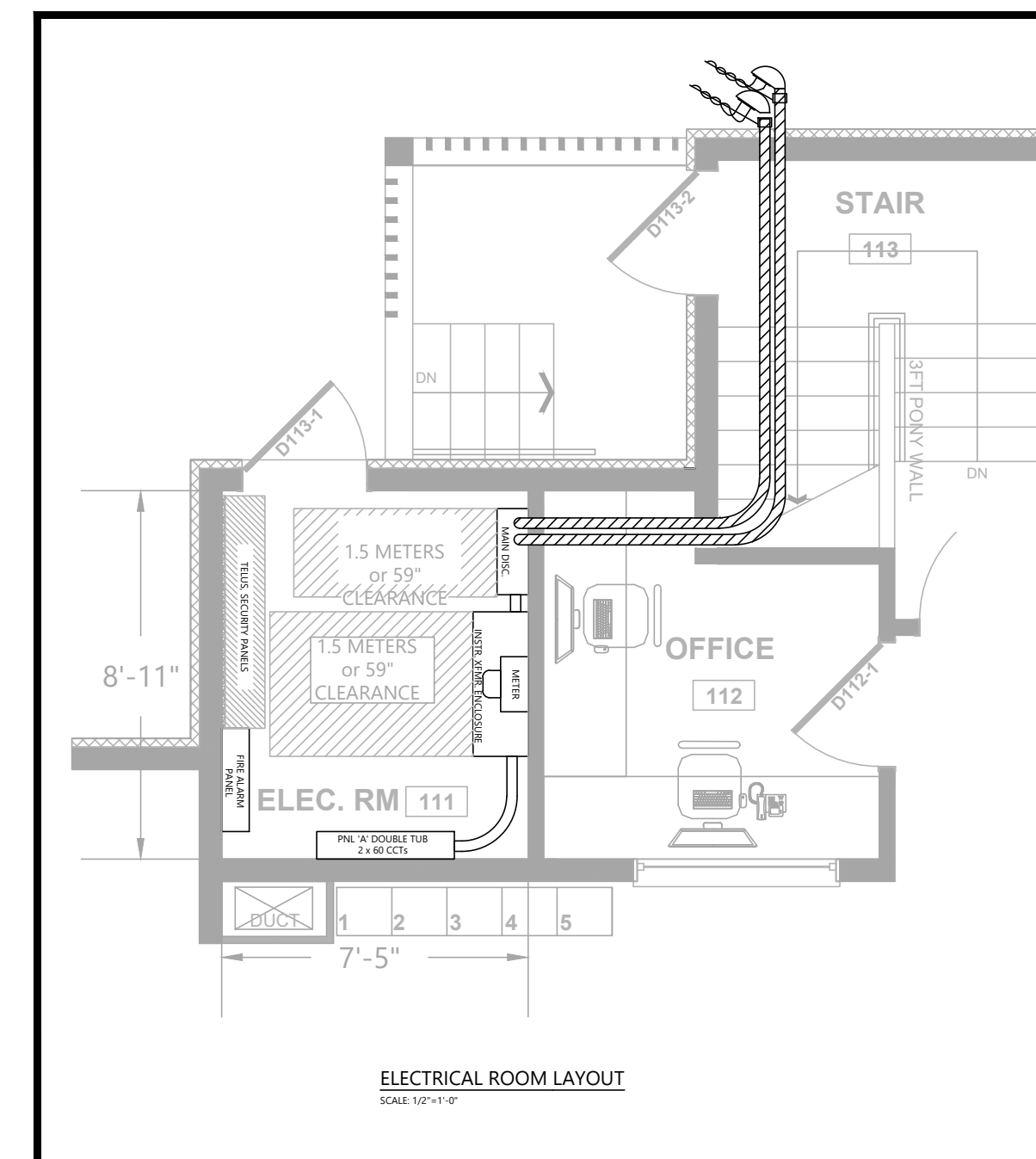
TO DATE BC HYDRO AND TELUS DESIGN FOR THIS PROJECT IS IN PROGRESS. THE SITE SCOPE OF WORK WILL BE ISSUED UPON AVAILABLE UPDATES BY ADDENDA.

CHECK BEFORE YOU DIG.
CONTACT BC1C BEFORE ANY EXCAVATION. DAMAGING GAS PIPES IS DANGEROUS AND COSTLY.

PROJECT NO.:	CHECKED BY:
2108	A.G.
DATE:	SCALE:
JULY 26, 2021	1/16" = 1' - 0"

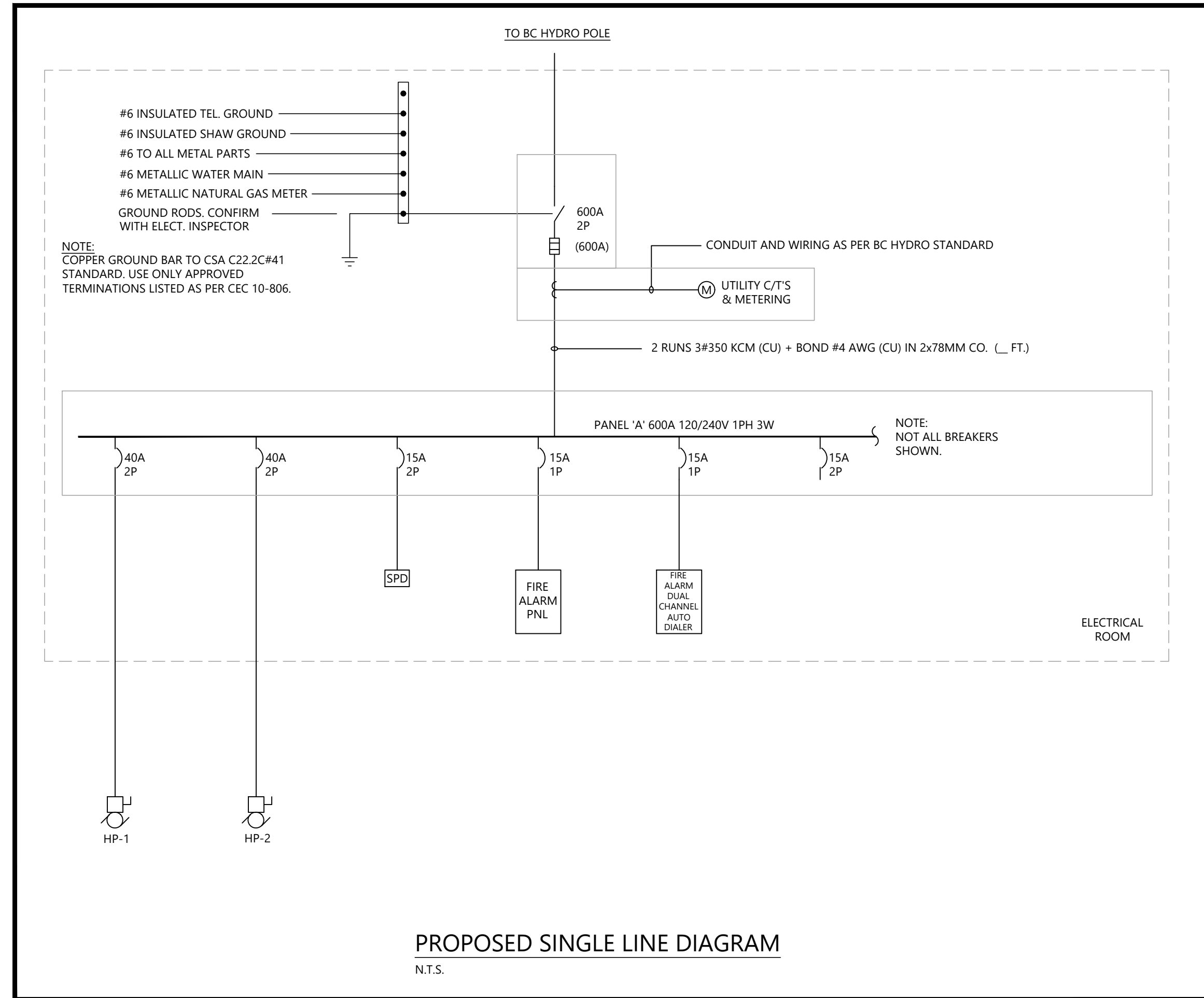
DRAWING NO.:

E0.1



West Quesnel Childcare Preliminary Load Calc.

Total Building Area	=	4,759 sq. ft.	or	442.13 sq. m
Allowed W/sq.m	=	25 W/sq.m	11053.25 @	100%
11.05 kW				
Mechanical Load				
Total Mechanical Load	=			34.42 kW
Laundry Equipment				
Washing Machine	=	7.20 kW	x	65%
				4.68 kW
Kitchen Equipment				
Fridge x 3	=	3.00 kW	x	80%
				2.40 kW
Microwaves x 3	=	4.32 kW	x	80%
				3.46 kW
Stove x 1	=	7.68 kW	x	80%
				6.14 kW
Kitchen Total Load				12.00 kW
Owner's Equipment				
	=	10.00 kW	x	100%
				10.00 kW
Future Equipment				
	=	15.00 kW	x	100%
				15.00 kW
Electrical Vehicle Charging Stations				
EVCS 1	=	7.68 kW	x	100%
				7.68 kW
EVCS 2	=	7.68 kW	x	100%
				7.68 kW
Total EVCSs				15.36 kW
Total Load				102.52 kW
At 120/240V/1Ph	=			427.16 Amps
At 125%	=			533.94 Amps
Recommended BC Hydro Service - 600A, 120/240V, 1 Phase, 3W, Overhead				



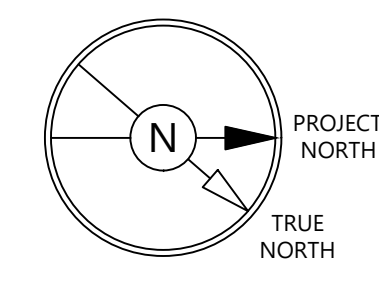
9		
8		
7		
6	ISSUED FOR BUILDING PERMIT AND TENDER ONLY	JUN 15/22
5	ISSUED FOR PRE-TENDER REVIEW ONLY	JUN 10/22
4	ISSUED FOR COORDINATION WITH UTILITIES R3	JUN 08/22
3	ISSUED FOR REVIEW	SEP 29/21
2	ISSUED FOR COORDINATION WITH UTILITIES	AUG 26/21
1	ISSUED FOR COORDINATION	JUL 26/21
NO.	REVISIONS	DATE

ELECTRICAL CONSULTANT:



HARBOURFRONT BUSINESS CENTRE
SUITE 500 - 224 WEST ESPLANADE
NORTH VANCOUVER, BC, V7M 1A4
778.997.5175 https://alegowest.ca

THIS DRAWING AND ALL ASSOCIATED DOCUMENTS ARE AN INSTRUMENT OF SERVICE. ALL RIGHTS REMAIN EXCLUSIVE PROPERTY OF ALEGO WEST AND MAY NOT BE USED OR REPRODUCED FOR ANY REASON WITHOUT THE WRITTEN PERMISSION OF ALEGO WEST. ANY REUSE OR REPRODUCTION OF THIS DRAWING BY ANY OTHER PARTY WITHOUT THE WRITTEN PERMISSION OF ALEGO WEST IS STRICTLY PROHIBITED. THE CITY OF QUESNEL HAS GRANTED PERMISSION FOR REPRODUCTION AND DISTRIBUTION OF THIS DRAWING. DO NOT SCALE THIS DRAWING.



PROJECT:

Q-KIDS DAYCARE CENTRE

420 Webster Avenue
Quesnel, BC

DRAWING:

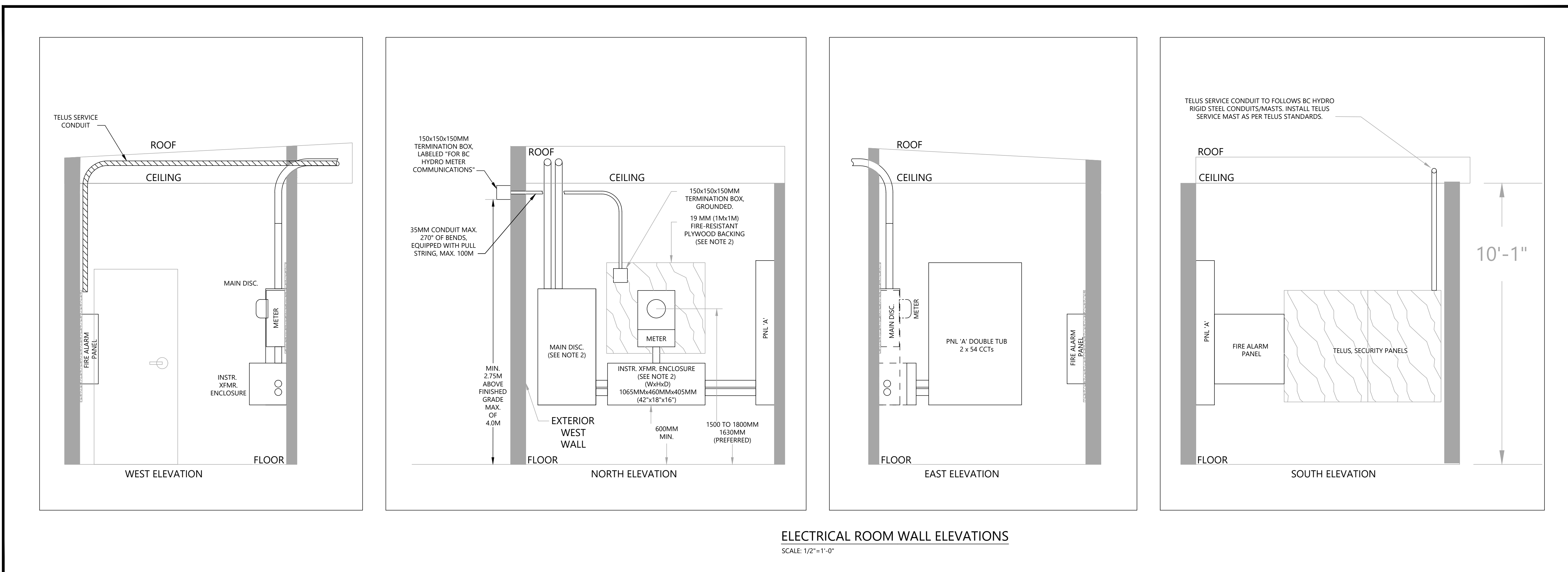
SINGLE LINE DIAGRAM AND SERVICE DETAILS

PROJECT NO.: 2108 CHECKED BY: A.G.

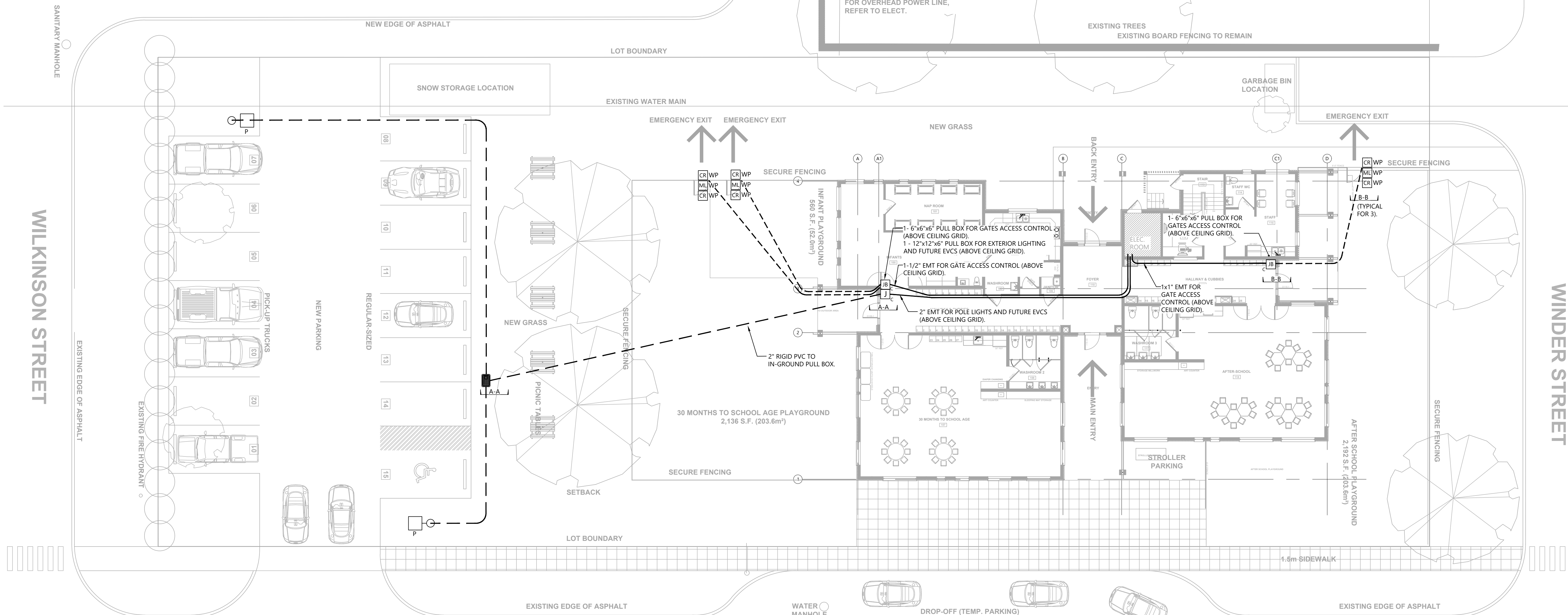
DATE: JULY 26, 2021 SCALE: AS SHOWN

DRAWING NO.:

E0.2



CHECK BEFORE YOU DIG.
CONTACT BC1C BEFORE ANY
EXCAVATION. DAMAGING
GAS PIPES IS DANGEROUS
AND COSTLY.



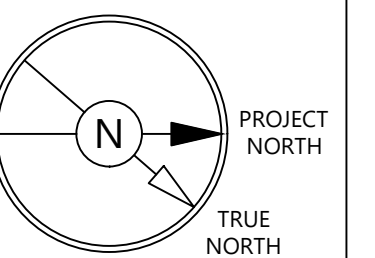
9		
8		
7		
6		
5		
4		
3		
2	ISSUED FOR BUILDING PERMIT AND TENDER ONLY	JUN 15/22
1	ISSUED FOR PRE-TENDER REVIEW ONLY	JUN 10/22
NO.	REVISIONS	DATE

ELECTRICAL CONSULTANT:



HARBOURFRONT BUSINESS CENTRE
SUITE 500 - 224 WEST ESPLANADE
NORTH VANCOUVER, BC, V7M 1A4
778.997.5175 <https://alegowest.ca>

THIS DRAWING AND ALL ASSOCIATED DOCUMENTS ARE THE PROPERTY OF ALEGO WEST. ALL RIGHTS REMAIN EXCLUSIVE PROPERTY OF ALEGO WEST AND MAY NOT BE USED OR REPRODUCED FOR ANY REASON WITHOUT THE WRITTEN CONSENT OF ALEGO WEST. ALEGO WEST ASSUMES NO LIABILITY FOR ANY USE OF THIS DRAWING. RELIANCE ON THIS DRAWING OR RECORDS BASED UPON THE DRAWING, BY THIRD PARTY ARE THE RESPONSIBILITY OF THOSE THIRD PARTIES UNLESS AUTHORIZED BY ALEGO WEST. THE CITY OF QUESNEL HAS GRANTED PERMISSION FOR REPRODUCTION AND DISTRIBUTION OF THIS DRAWING. DO NOT SCALE THIS DRAWING.



PROJECT:

Q-KIDS DAYCARE CENTRE

420 Webster Avenue
Quesnel, BC

DRAWING:

**SITE PLAN
EXTERIOR WORK**

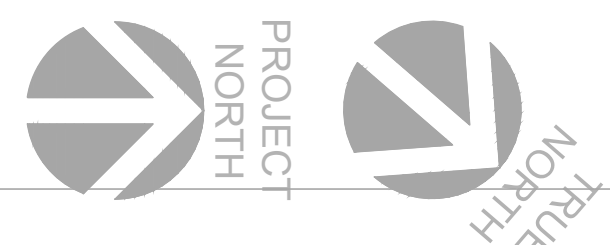
PROJECT NO.:	2108	CHECKED BY:	A.G.
DATE:	JULY 26, 2021	SCALE:	3/32" = 1' - 0"
DRAWING NO.:			

E0.4

WILKINSON STREET

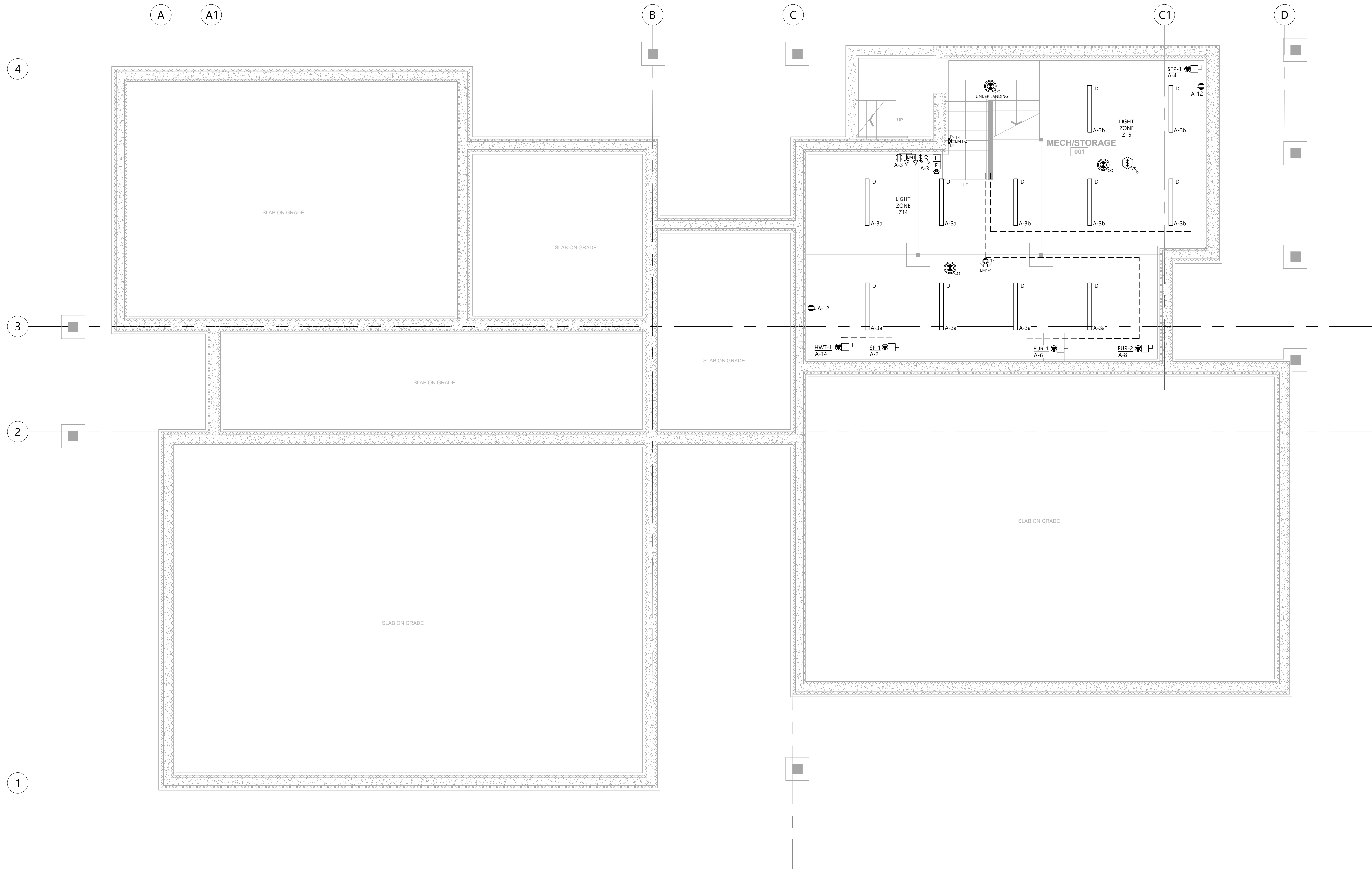
WINDER STREET

WEBSTER AVENUE





Box 4451, QUESNEL, BC V2J 3J6
 +1(250) 991-6416 www.eclipseprojects.ca
 +1(250) 991-6416 go.eclipse@live.ca
 PROJECT NO. 00475



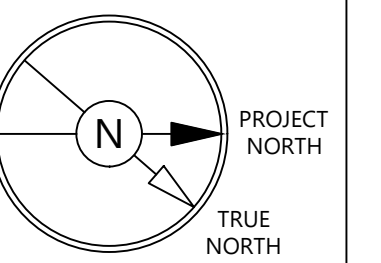
9		
8		
7		
6		
5	ISSUED FOR BUILDING PERMIT AND TENDER ONLY	JUN 15/22
4	ISSUED FOR PRE-TENDER REVIEW ONLY	JUN 10/22
3	ISSUED FOR REVIEW	SEP 29/21
2	ISSUED FOR COORDINATION WITH UTILITIES	AUG 26/21
1	ISSUED FOR COORDINATION	JUL 26/21
NO.	REVISIONS	DATE

ELECTRICAL CONSULTANT:



HARBOURFRONT BUSINESS CENTRE
SUITE 500 - 224 WEST ESPLANADE
NORTH VANCOUVER, BC, V7M 1A4
778.997.5175 <https://alegowest.ca>

THIS DRAWING AND ALL ASSOCIATED DOCUMENTS ARE AN INSTRUMENT OF SERVICE. ALL RIGHTS REMAIN EXCLUSIVE PROPERTY OF ALEGO WEST AND MAY NOT BE USED OR REPRODUCED FOR ANY REASON WITHOUT THE WRITTEN CONSENT OF ALEGO WEST.
 COPYRIGHT OF THIS DRAWING, ITS CONTENT AND DESIGN ARE RESERVED BY ALEGO WEST. ANY USE OF THIS DRAWING, RELIANCE ON THE DRAWING, OR RECORDING BASED UPON THE DRAWING, BY THIRD PARTY ARE THE RESPONSIBILITY OF THOSE THIRD PARTIES UNLESS AUTHORIZED BY ALEGO WEST. THE CITY OF QUESNEL HAS COPYRIGHT PERMISSION FOR REPRODUCTION AND DISTRIBUTION OF THIS DRAWING. DO NOT SCALE THIS DRAWING.



PROJECT:

Q-KIDS DAYCARE CENTRE

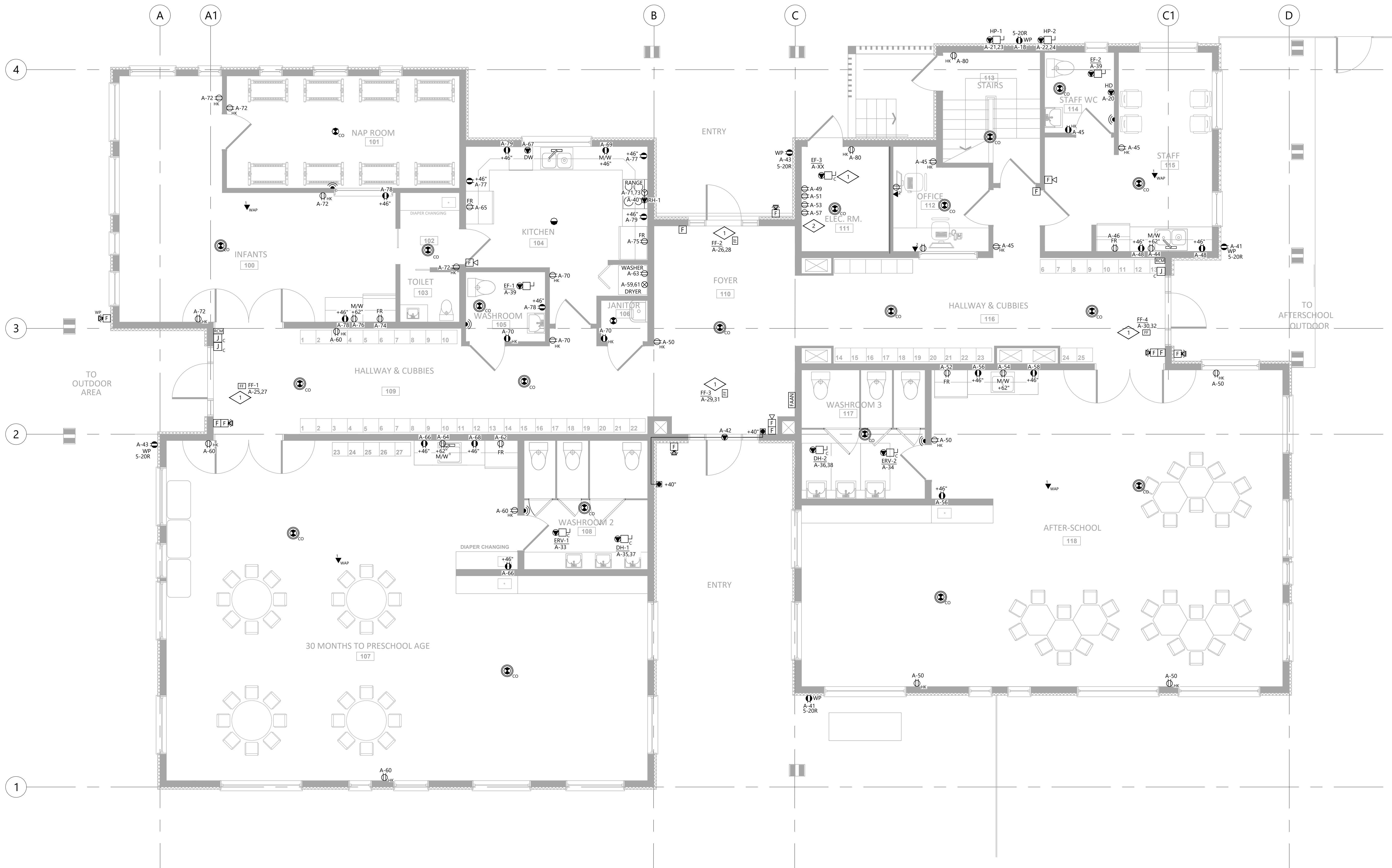
420 Webster Avenue
Quesnel, BC

DRAWING:

BASEMENT POWER AND LIGHTING PLAN

PROJECT NO.:	CHECKED BY:
2108	A.G.
DATE:	SCALE:
JULY 26, 2021	1/4" = 1' - 0"
DRAWING NO.:	

E1.0



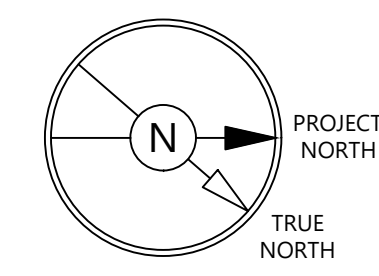
9		
8		
7		
6		
5		
4	ISSUED FOR BUILDING PERMIT AND TENDER ONLY	JUN 15/22
3	ISSUED FOR PRE-TENDER REVIEW ONLY	JUN 10/22
2	ISSUED FOR REVIEW	SEP 29/21
1	ISSUED FOR COORDINATION	JUL 26/21
NO.	REVISIONS	DATE

ELECTRICAL CONSULTANT:



HARBOURFRONT BUSINESS CENTRE
SUITE 500 - 224 WEST ESPLANADE
NORTH VANCOUVER, BC, V7M 1A4
778.997.5175 <https://alegowest.ca>

THIS DRAWING AND ALL ASSOCIATED DOCUMENTS ARE AN INSTRUMENT OF SERVICE. ALL RIGHTS REMAIN EXCLUSIVE PROPERTY OF ALEGO WEST AND MAY NOT BE USED OR REPRODUCED FOR ANY REASON WITHOUT THE WRITTEN PERMISSION OF ALEGO WEST.
COPYRIGHT OF THIS DRAWING, ITS CONTENT AND DESIGN ARE RESERVED BY ALEGO WEST. ANY USE OF THIS DRAWING, REliance ON THE DRAWING, OR RECORDS BASED UPON THE DRAWING, BY THIRD PARTY ARE THE RESPONSIBILITY OF THOSE THIRD PARTIES UNLESS AUTHORIZED BY ALEGO WEST. THE CITY OF QUESNEL HAS COPYRIGHT PERMISSION FOR REPRODUCTION AND DISTRIBUTION OF THIS DRAWING. DO NOT SCALE THIS DRAWING.



PROJECT:
Q-KIDS DAYCARE CENTRE

420 Webster Avenue
Quesnel, BC

DRAWING:
POWER PLAN

- KEY NOTES:**
- 1 REFER TO MECHANICAL DRAWINGS FOR EXACT LOCATION OF MECHANICAL EQUIPMENT.
 - 2 CONFIRM EXACT LOCATION OF EQUIPMENT RECEPTABLES/OUTLETS FOR COMMUNICATIONS, SECURITY AND ACCESS CONTROL WITH DIVISION 27 AND DIVISION 28 CONTRACTORS.

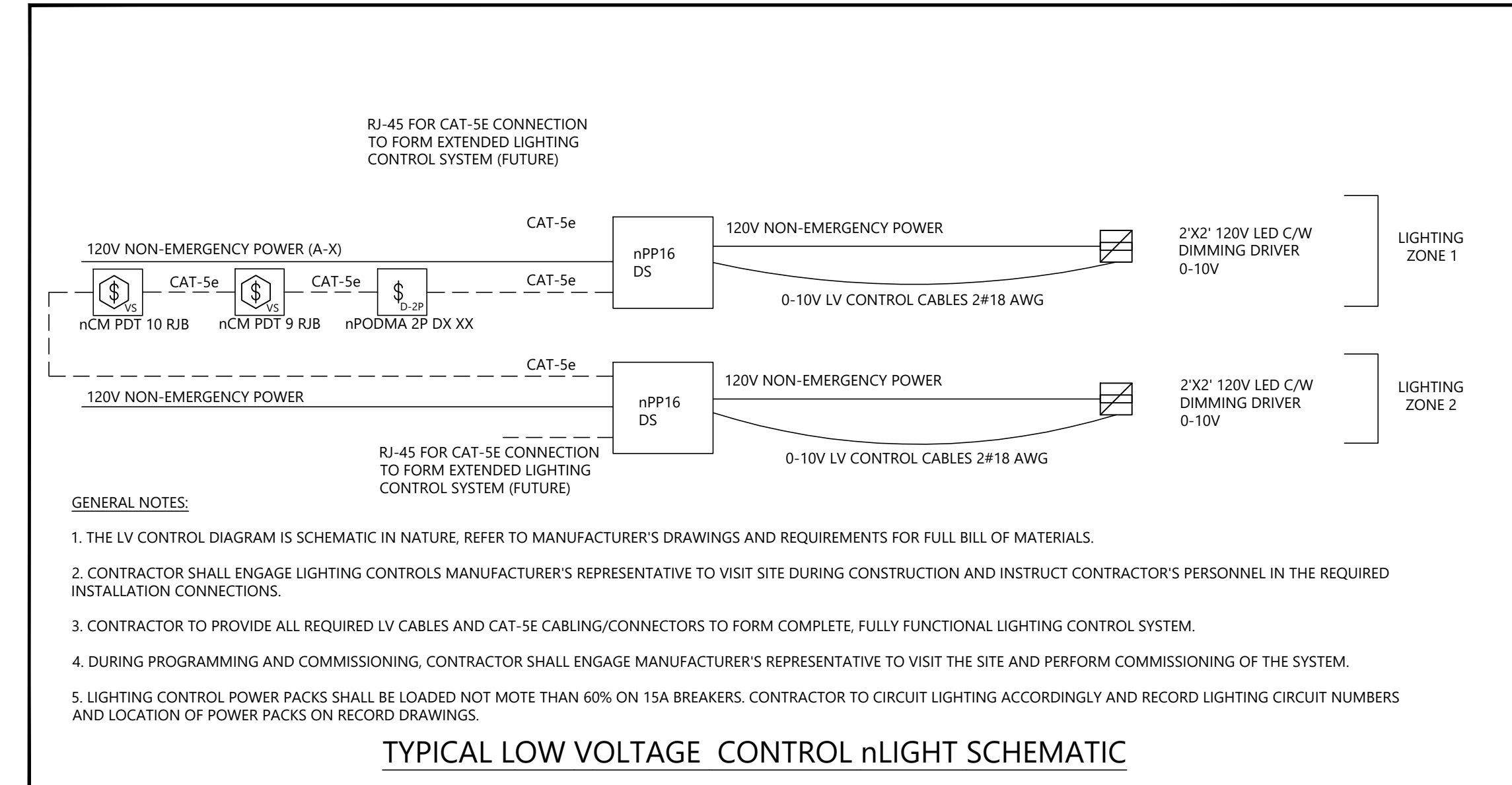
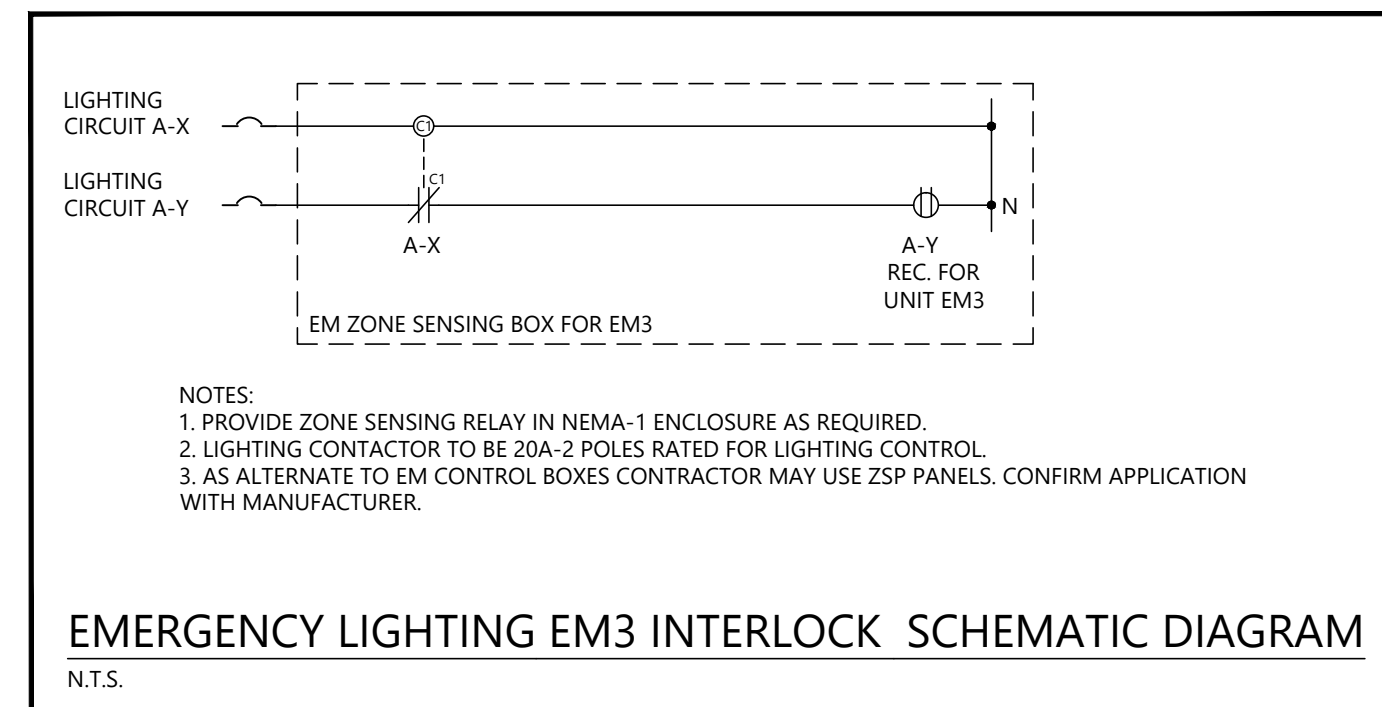
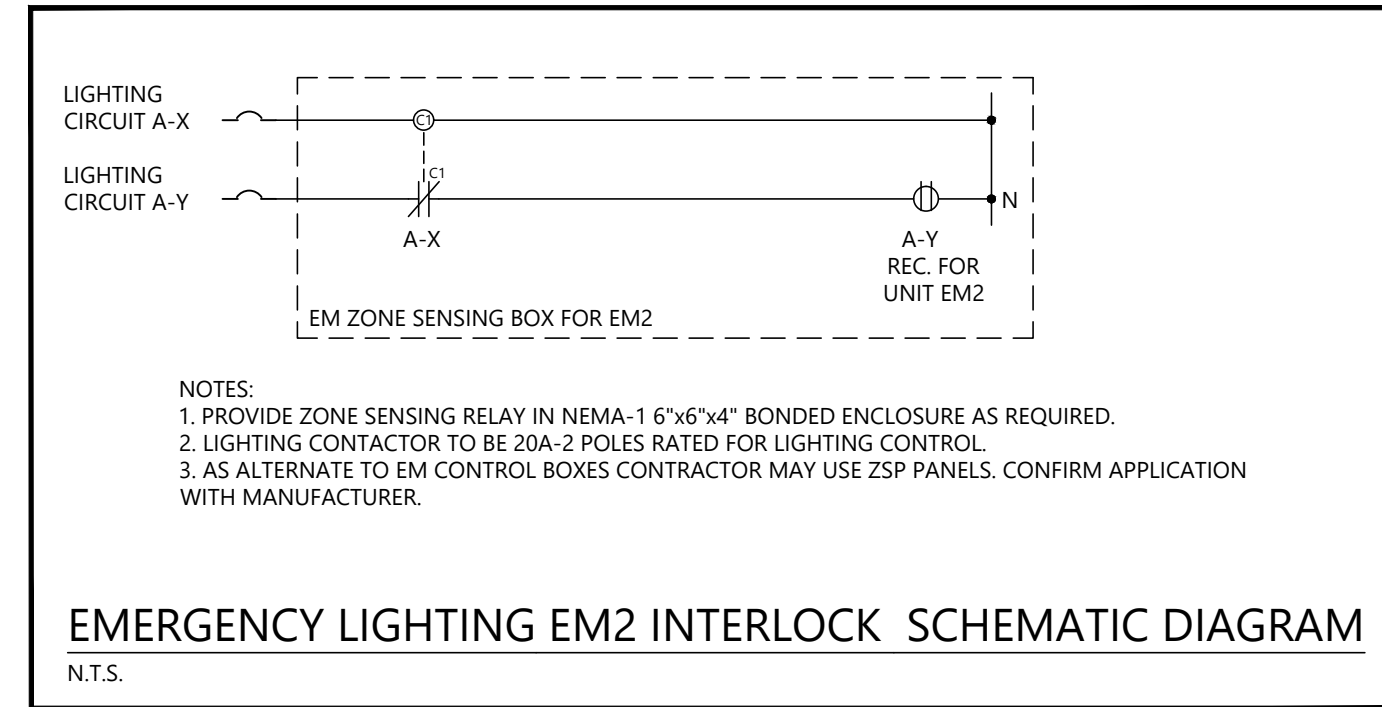
PROJECT NO.: 2108	CHECKED BY: A.G.
DATE: JULY 26, 2021	SCALE: 1/4" = 1' - 0"

DRAWING NO.:
E2.0

EMERGENCY BATTERY PACK SUMMARY			
BATTERY PACK ID	LOCATION	BATTERY PACK WATTAGE CAPACITY	CONNECTED LOAD, WATTS
EM1	MECHANICAL ROOM /STORAGE	36	28
EM2	ELECTRICAL ROOM	144	120
EM3	JANITOR	144	102

EMERGENCY LUMINAIRE SCHEDULE		
TYPE	DESCRIPTION	WATTS
T1	READY-LITE EXTERIOR NMMP-LD7-GY-C/W WIRE GUARDS 460.0029-RL 2x5W LED	8
T2	READY-LITE RM-2-LD7 2x4W LED	8
T3	READY-LITE RM-2-LD9 2x5W LED	10
T4	READY-LITE RM-2-LD10 2x6W LED	12
EM1	READY-LITE LDX12-36-AD-2-LD7 LED	8
EM2	READY-LITE LDX12-144-AD-2-LD7 LED	8
EM3	READY-LITE LDX12-144-AD-2-LD7 LED	8

EXIT SIGN SCHEDULE	
TYPE/DESCRIPTION	READY-LITE CM-SS-SP-RL OR APPROVED EQUAL



9		
8		
7		
6		
5		
4		
3	ISSUED FOR BUILDING PERMIT AND TENDER ONLY	JUN 15/22
2	ISSUED FOR PRE-TENDER REVIEW ONLY	JUN 10/22
1	ISSUED FOR REVIEW	SEP 29/21
NO.	REVISIONS	DATE

ELECTRICAL CONSULTANT:



HARBOURFRONT BUSINESS CENTRE
SUITE 500 - 224 WEST ESPLANADE
NORTH VANCOUVER, BC, V7M 1A4
778.997.5175 <https://alegowest.ca>

THIS DRAWING AND ALL ASSOCIATED DOCUMENTS ARE AN INSTRUMENT OF SERVICE. ALL THIRD PARTY EXCLUSIVE PROPERTY OF ALEGO WEST AND MAY NOT BE USED OR REPRODUCED FOR ANY REASON WITHOUT THE WRITTEN PERMISSION OF ALEGO WEST. COPYRIGHT OF THIS DRAWING, ITS CONTENT AND DESIGN ARE RESERVED BY ALEGO WEST. ANY USE OF THIS DRAWING, RELIANCE ON THE DRAWING, OR RECORDS BASED UPON THE DRAWING, BY THIRD PARTY ARE THE RESPONSIBILITY OF THOSE THIRD PARTIES UNLESS AUTHORIZED BY ALEGO WEST. THE CITY OF QUESNEL HAS GRANTED PERMISSION FOR REPRODUCTION AND DISTRIBUTION OF THIS DRAWING. DO NOT SCALE THIS DRAWING.

LUMINAIRE SCHEDULE													
Type	Description	Lamp Type	Driver / Ballast Type	Lamps per Luminaire	Watts per Luminaire	CRI	Initial Lumens	Colour Temperature (K)	Lamp Life (Hours)	Mounting	Manufacturer	Catalogue Number	Remarks
A	2'x2' LED RECESSED	LED	120V DIM	1	28	80	4000	3500	60,000	T-BAR	LITHONIA	SPX 2x2 4000LM 80CRI 35K MPL MVOLT MW	
A1	2'x2' LED RECESSED	LED	120V DIM	1	35	80	4800	3500	60,000	T-BAR	LITHONIA	SPX 2x2 4800LM 80CRI 35K MPL MVOLT MW	
A2	2'x2' LED RECESSED	LED	120V DIM	1	28	80	4800	3500	60,000	DRYWALL	LITHONIA	SPX 2x2 4000LM 80CRI 35K MPL MVOLT MW C/W DGA 22	
BA	ARCHITECTURAL PENDANT	LED	120V DIM	1	17.6	80	2481	3500	-	PENDANT	EUREKA LIGHTING	EXPO 74545-48 LED 35K 80 120V DV AC 60 REG C/W SWIVEL 2820-16MM WHITE-WHE-WH	
C	ROUND DOWNLIGHT	LED	120V DIM	1	13.6	90	1070	3500	50,000	RECESSED	JUNO	JPDZ4-DB-ALO10-SWW5WD-3500K-90CRI-JPDZ4RDNCF-MVOLT-T-ZT10-WWH	
D	ARCH. STRIPLIGHT	LED	120V DIM	1	30	80	3000	3500		SURFACE	LITHONIA	ZL1F-L4B-3000LM-MDD-MVOLT-35K-80CRI-WH	
F	OUTDOOR SCONE	LED	120V DIM	1	19.5	-	910	3000		SURFACE	WAC	WS-W1414.BZ	
F1	MINI SECURITY LIGHT	LED	120V DIM	1	11	-	663	3500	100,000	SURFACE	ACCULITE	MSL 235KUNBZMS (BRONZE WITH MOTION SENSOR)	
U2	UNDERCABINET LIGHT	LED	120V	1	10.2	90	742	3000	50,000	SURFACE	LITHONIA	UCEL-24IN-30K-90CRI-WH-UCD JB-UC ERC-UC ERC24	
U3	UNDERCABINET LIGHT	LED	120V	1	14.8	90	1162	3000	50,000	SURFACE	LITHONIA	UCEL-36IN-30K-90CRI-WH-UCD JB-UC ERC-UC ERC24	
U4	UNDERCABINET LIGHT	LED	120V	1	19.5	90	1603	3000	50,000	SURFACE	LITHONIA	UCEL-48IN-30K-90CRI-WH-UCD JB-UC ERC-UC ERC24	
P	POLE LIGHT	LED	120V	TBD	TBD	-	9000	3000	-	POLE	SOLERA	SCSD-TBD-9000-3000K-UNV-SPD-CPL-TY4-TCO-PC-BK 12- FEET POLE C/W PPB-1.8-1.8M PYRAMID PARKING LOT BASE BY FRASERWAY PRECAST LTD.	

General Notes (applies to all luminaires):
A - Electrical Contractor is responsible for receiving, storage and reporting of damages whether luminaires are supplied by Owner or Contractor.
B - Contractor is to provide one hour fire rated enclosure around all recessed fixtures where required by Code. All recessed luminaires shall be I.C. rated.
C - All luminaires to be adequately attached directly to the building structure. All T-bar luminaires to be suspended independently of T-bar. Plastic inserts or anchors are not acceptable.
D - Lot pricing of luminaires by manufacturers, distributors, wholesalers or suppliers will not be accepted.
E - Cost allowances (if any in this project) for luminaires shall include all applicable taxes and freight cost only. Markups, installation, offloading, etc. shall be included in base tender quote.
F - all luminaire shop drawings shall be submitted with driver information.

Remarks:
1 -
2 -

PROJECT:

Q-KIDS DAYCARE CENTRE

420 Webster Avenue
Quesnel, BC

DRAWING:
LUMINAIRE SCHEDULE AND DETAILS

PROJECT NO.: 2108	CHECKED BY: A.G.
DATE: JULY 26, 2021	SCALE: N.T.S.

DRAWING NO.:

E2.1

MECHANICAL EQUIPMENT SCHEDULE																														
Project #2108 WEST QUESNEL CHILDCARE																														
LEGEND:										GENERAL NOTES:																				
E ELECTRICAL CONTRACTOR					FPC FACTORY PROVIDED CONTROL					1 REFER TO MECHANICAL DRAWINGS FOR ADDITIONAL EQUIPMENT DETAILS.																				
M MECHANICAL CONTRACTOR					CO/VG GAS SENSOR					2 LOCATION ON DRAWING NOT CONFIRMED.																				
T-In THERMOSTAT - LINE VOLTAGE					TC TIMECLOCK					3 ALL FEEDERS/WIRING AND CONDUITS TO BE UPSIZED TO OVERCOME VOLTAGE DROP AS REQUIRED.																				
T-lv THERMOSTAT - LOW VOLTAGE, BY DIV.15					PCS PACKAGED CONTROL SYSTEM					4 ALL FEEDERS/WIRING IS COPPER.																				
T-rv THERMOSTAT - REVERSE ACTING					S-In SWITCH - LINE VOLTAGE ON/OFF					EQUIPMENT NOTES																				
T-D THERMOSTAT - DUCT, SCR CONTROLLER					S-vs SWITCH - VARIABLE SPEED					1 UNIT SERVES FUR-1																				
VFD VARIABLE FREQUENCY DRIVE					S-p SWITCH - PRESSURE					2 UNIT SERVES FUR-2																				
Mag MAGNETIC STARTER (HOA)					S-h SWITCH - HAND/OFF/AUTO					3 EQUIPMENT SUPPLIED BY DIV. 16. FACTORY PROVIDED THERMOSTAT IS ON UNIT.																				
Man MANUAL STARTER					S-f SWITCH - FLOAT					4																				
					OC OCCUPANCY SENSOR (LIGHTING CONTROLS SYSTEM)					5																				
					TS TIMER SWITCH					6																				
TAG	DESCRIPTION	LOCATION	HP	WATTS	FLA	MCA	VOLTAGE	PHASE	BREAKER	# OF POLES	SOURCE	CCT #	# OF CONDUCTORS	WIRE SIZE	EQUIPMENT RESPONSIBILITIES															
															UNIT SUPPLY	DISCONNECT	STARTER	CONTROLS	EQUIPMENT NOTES											
ERV-1	HEAT RECOVERY UNIT	PRESCHOOL WASHROOM				9.0	120	1	15	1	PNL 'A'	A-33	2	#12	M	M	E	-	E	E	E	Mag	M	E	E	T-C	M	E	E	
ERV-2	HEAT RECOVERY UNIT	AFTERSCHOOL WASHROOM				9.0	120	1	15	1	PNL 'A'	A-34	2	#12	M	M	E	-	E	E	E	Mag	M	M	E	T-C	M	E	E	
DH-1	DUCT HEATER	PRESCHOOL WASHROOM		3500			240	2	20	2	PNL 'A'	A-35,37	2	#12	M	M	E	-	M	E	E	-	-	-	T-D	M	M	E	E	
DH-2	DUCT HEATER	AFTERSCHOOL WASHROOM		3500			240	2	20	2	PNL 'A'	A-36,38	2	#12	M	M	E	-	M	E	E	-	-	-	T-D	M	M	E	E	
HWT-1	DOMESTIC HOT WATER TANK	MECHANICAL BASEMENT				5.0	120	1	15	1	PNL 'A'	A-14	2	#12	M	M	E	-	E	E	E	-	-	-	T-In	M	E	E	E	
EF-1	EXHAUST FAN	INFANT WASHROOM		80			120	1	15	1	PNL 'A'	A-39	2	#12	M	M	E	-	E	E	E	Man	E	E	E	S-In	M	M	M	
EF-2	EXHAUST FAN	STAFF WASHROOM		80			120	1	15	1	PNL 'A'	A-39	2	#12	M	M	E	-	E	E	E	Man	E	E	E	S-In	M	M	M	
RH-1	RANGE HOOD	KITCHEN				1.9	120	1	15	1	PNL 'A'	A-40	2	#12	M	M	E	-	E	E	E	-	-	-						
FUR-1	FURNACE	MECHANICAL BASEMENT				10.9	120	1	15	1	PNL 'A'	A-6	2	#12	M	M	E	-	E	E	E	Mag	M	E	E	T-In	M	E	E	
FUR-2	FURNACE	MECHANICAL BASEMENT				10.9	120	1	15	1	PNL 'A'	A-8	2	#12	M	M	E	-	E	E	E	Mag	M	E	E	T-In	M	E	E	
HP-1	HEAT PUMP	OUTSIDE OF STAIRS				21.1	25.8	240	1	40	2	PNL 'A'	A-21,23	2	#8	M	M	E	-	E	E	E	Mag	M	M	E	T-In	M	E	E
HP-2	HEAT PUMP	OUTSIDE OF STAIRS				21.1	25.8	240	1	40	2	PNL 'A'	A-22,24	2	#8	M	M	E	-	E	E	E	Mag	M	M	E	T-In	M	E	E
SP-1	SUMP PUMP	MECHANICAL BASEMENT	1/2				120	1	15	1	PNL 'A'	A-2	2	#12	M	M	E	-	E	E	E	Mag	M	M	E	S-f	M	E	E	
STP-1	STORM SUMP PUMP	MECHANICAL BASEMENT	1/2				120	1	15	1	PNL 'A'	A-4	2	#12	M	M	E	-	E	E	E	Mag	M	M	E	S-f	M	E	E	
FF-1	FORCE FLOW HEATER	SE ENTRANCE		4000			240	1	20	2	PNL 'A'	A-25,27	2	#10	E	E	E	-	E	E	E	-	E	E	E	FPC	E	E	E	
FF-2	FORCE FLOW HEATER	SW ENTRANCE		4000			240	1	20	2	PNL 'A'	A-26,28	2	#10	E	E	E	-	E	E	E	-	E	E	E	FPC	E	E	E	
FF-3	FORCE FLOW HEATER	NE ENTRANCE		4000			240	1	20	2	PNL 'A'	A-29,31	2	#10	E	E	E	-	E	E	E	-	E	E	E	FPC	E	E	E	
FF-4	FORCE FLOW HEATER	NW ENTRANCE		4000			240	1	20	2	PNL 'A'	A-30,32	2	#10	E	E	E	-	E	E	E	-	E	E	E	FPC	E	E	E	

9		
8		
7		
6		
5		
4		
3	ISSUED FOR BUILDING PERMIT AND TENDER ONLY	JUN 15/22
2	ISSUED FOR PRE-TENDER REVIEW ONLY	JUN 10/22
1	ISSUED FOR REVIEW	SEP 29/21
NO.	REVISIONS	DATE

PANEL A (2 TUBSx54CCTs)										LOCATION: ELECTRICAL ROOM									
NOTE	DESCRIPTION	BKR	CCT	PHASE	CCT	BKR	DESCRIPTION	NOTE		BKR	CCT	PHASE	CCT	BKR	DESCRIPTION	NOTE			
	EXIT SIGNS	15A	1	A	2	15A	SP-1												
	LTG BASEMENT	15A	3	B	4	15A	STP-1												
	LTG OFFICE AREA	15A	5	A	6	15A	FUR-1												
	LTG AFTERSCHOOL AREA	15A	7	B	8	15A	FUR-2												
	LTG INFANT AREA	15A	9	A	10	15A	SPARE												
	LTG PRESCHOOL AREA	15A	11	B	12	15A	BASEMENT GFCI REC.												
	LTG EXTERIOR	15A	13	A	14	15A	HWT-1												
	LTG EXTERIOR	15A	15	B	16	15A	SPARE												
	LTG SPARE	15A	17	A	18	20A	GFCI REC. EXTERIOR												
	LTG SPARE	15A	19	B	20	15A	STAFF WC HAND DRYER												
	HP-1	40A	21	A	22	40A	HP-2												
		2P	23	B	24	2P													
	FF-1	20A	25	A	26	20A	FF-2												
		2P	27	B	28	2P													
	FF-3	20A	29	A	30	20A	FF-4												
		2P	31	B	32	2P													
	EVR-1	15A	33	A	34	15A	EVR-2												
		2P	35	B	36	20A													
	DH-1	2P	37	A	38	2P	DH-2												
	EF-1, EF-2	15A	39	B	40	15A	EF-3, RH-1												
	GFCI REC. EXTERIOR	20A	41	A	42	15A	MAIN ENTRANCE DOOR OPERATOR												
	GFCI REC. EXTERIOR	20A	43	B	44	15A	STAFF MICROWAVE REC.												
	HOUSEKEEPING REC.	15A	45	A	46	15A	STAFF FRIDGE REC.												
	OFFICE REC.	15A	47	B	48	20A	STAFF COUNTERTOP GFCI REC.												
	TELUS REC.	15A	49	A	50	15A	AFTERSCHOOL HOUSEKEEPING REC.												
	TRANSMITTER REC.	15A	51	B	52	15A	AFTERSCHOOL FRIDGE REC.												
	SECURITY REC.	15A	53	A	54	15A	AFTERSCHOOL MICROWAVE REC.												
	FIRE ALARM CONTROL PANEL	15A	55	B	56	20A	AFTERSCHOOL COUNTERTOP REC.												
	FIRE ALARM TRANSMITTER	15A	57	A	58	20A	AFTERSCHOOL COUNTERTOP REC.												
	KITCHEN WASHER/DRYER	30A	59	B	60	15A	PRE-SCHOOL HOUSEKEEPING REC.												
		2P	61	A	62	15A	PRE-SCHOOL FRIDGE REC.												
	KITCHEN WASHER	15A	63	B	64	15A	PRE-SCHOOL MICROWAVE REC.												
	KITCHEN FRIDGE REC.	15A	65	A	66	20A	PRE-SCHOOL COUNTERTOP GFCI REC.												
	KITCHEN DISHWASHER	20A	67	B	68	15A	PRE-SCHOOL COUNTERTOP GFCI REC.												
	KITCHEN MICROWAVE	15A	69	A	70	15A	HOUSEKEEPING REC.												
	KITCHEN RANGE	40A	71	B	72	15A	HOUSEKEEPING REC.												
		2P	73	A	74	15A	INFANTS FRIDGE REC.												
	KITCHEN FRIDGE REC.	15A	75	B	76	15A	INFANTS MICROWAVE REC.												
	KITCHEN COUNTERTOP REC.	20A	77	A	78	15A	INFANTS COUNTERTOP REC.												
	KITCHEN COUNTERTOP REC.	20A	79	B	80	15A	HOUSEKEEPING REC.												
	EV-1 (FUTURE)	40A	81	A	82	40A	EV-3 (FUTURE)												
		2P	83	B	84	2P													
	EV-2 (FUTURE)	40A	85	A	86	40A	EV-4 (FUTURE)												
		2P	87	B	88	2P													
	SPARE	15A	89	A	90	15A	SPARE												
	SPARE	15A	91	B	92	15A	SPARE												
	SPARE	15A	93	A	94	15A	SPARE												
	SPARE	15A	95	B	96	15A	SPARE												
	SPARE	15A	97	A	98	15A	SPARE												
	SPARE	15A	99	B	100	15A	SPARE												
	SPARE	15A	101	A	102	15A	SPARE												
	SPARE	15A	103	B	104	15A	SPARE												
	SPARE	15A	105	A	106	15A	SPARE												
	SPARE	15A	107	B	108	15A	SPARE												

FED FROM MAIN FUSED DISCONNECT SWITCH. PROTECTED BY 600A FUSES.
NOTES:
1
2

ELECTRICAL CONSULTANT:



HARBOURFRONT BUSINESS CENTRE
SUITE 500 - 224 WEST ESPLANADE
NORTH VANCOUVER, BC, V7M 1A4
778.997.5175 https://alegowest.ca

THIS DRAWING AND ALL ASSOCIATED DOCUMENTS ARE AN INSTRUMENT OF SERVICE. ALL RIGHTS REMAIN EXCLUSIVE PROPERTY OF ALEGO WEST AND MAY NOT BE USED OR REPRODUCED FOR ANY REASON WITHOUT THE WRITTEN CONSENT OF ALEGO WEST.
COPYRIGHT OF THIS DRAWING, ITS CONTENT AND DESIGN ARE RESERVED BY ALEGO WEST. ANY USE OF THIS DRAWING, RELIANCE ON THE DRAWING OR RECORDS BASED UPON THE DRAWING, BY THIRD PARTY ARE THE RESPONSIBILITY OF THOSE THIRD PARTIES UNLESS AUTHORIZED BY ALEGO WEST. THE CITY OF QUESNEL HAS COPYRIGHT PERMISSION FOR REPRODUCTION AND DISTRIBUTION OF THIS DRAWING. DO NOT SCALE THIS DRAWING.

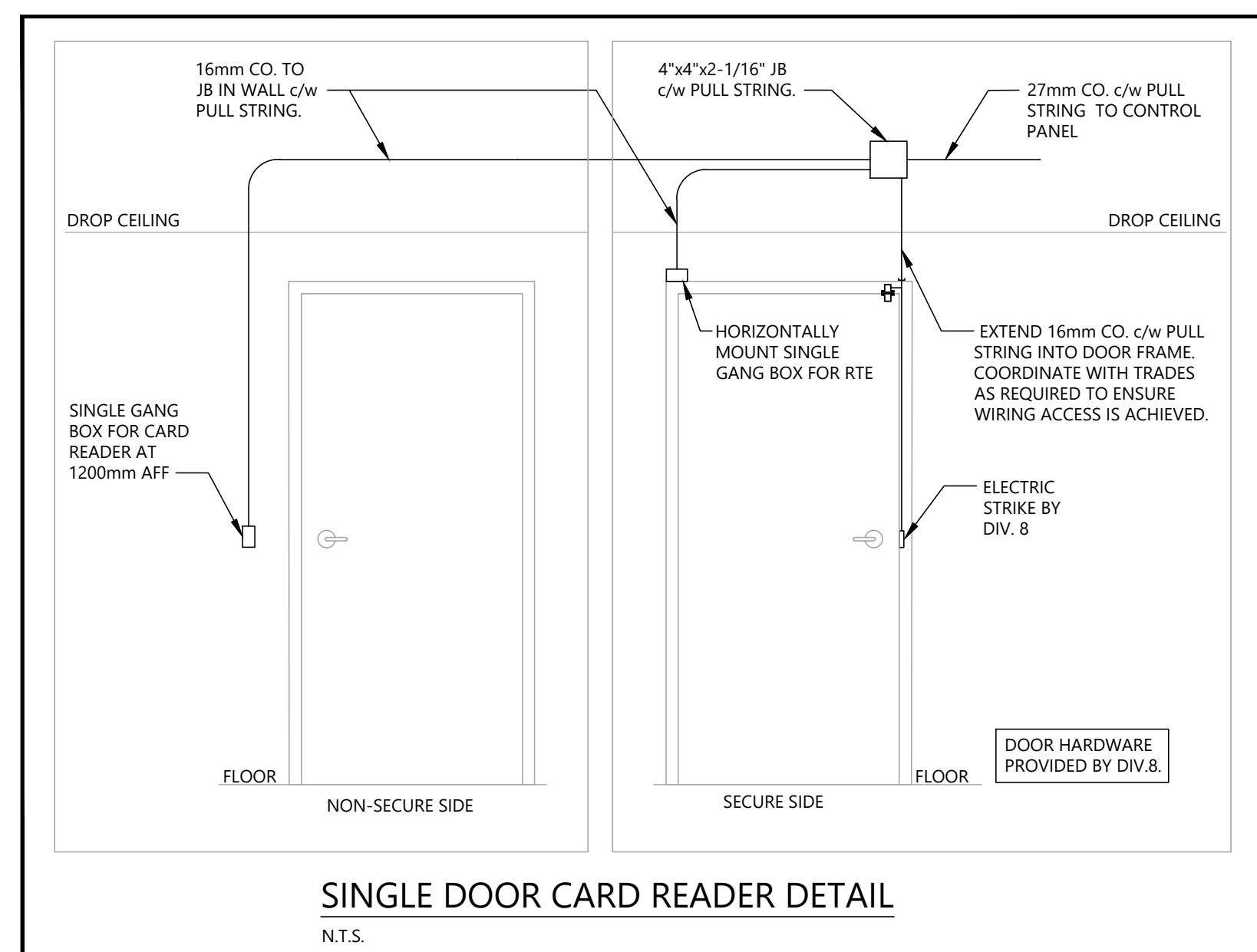
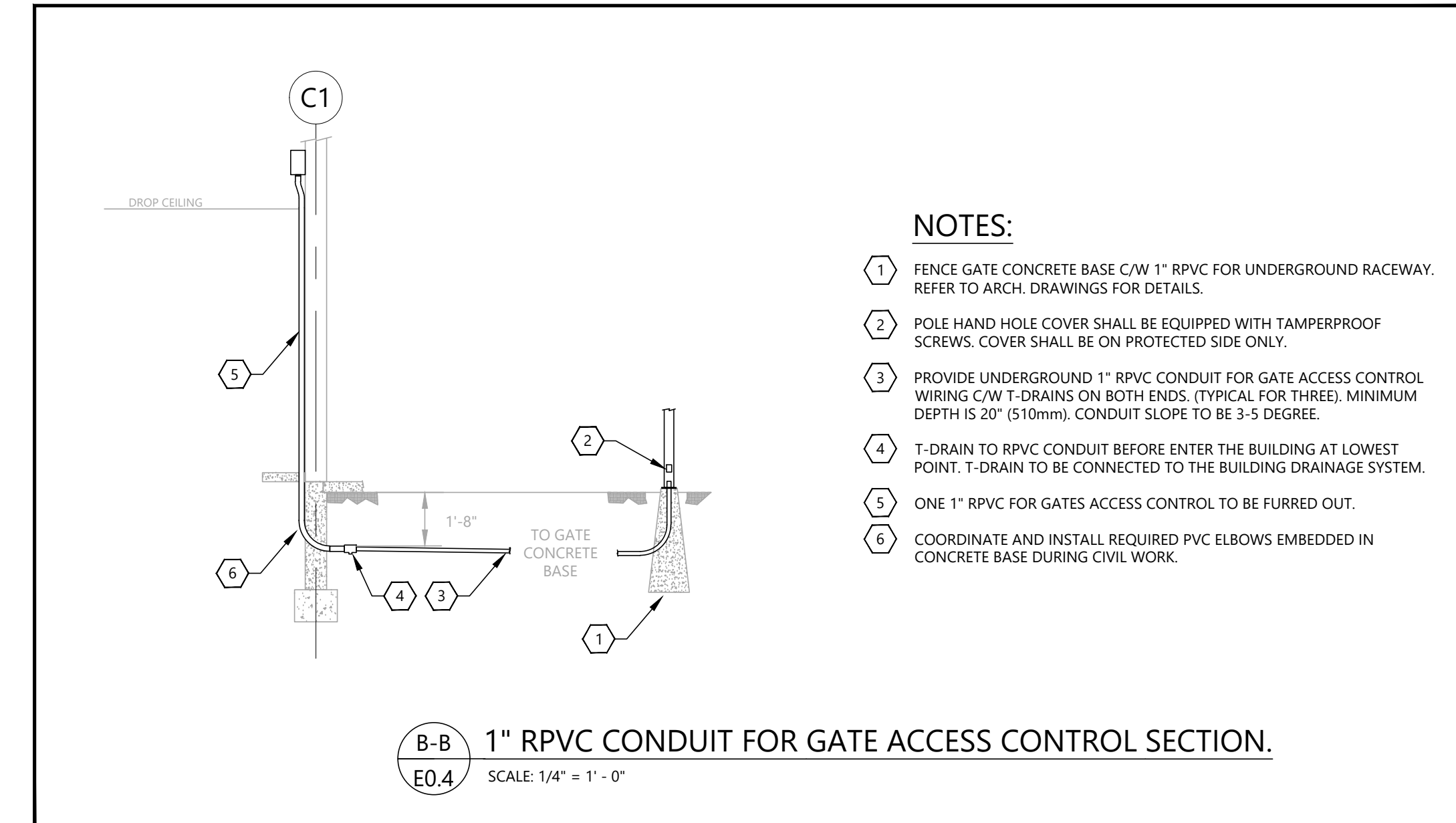
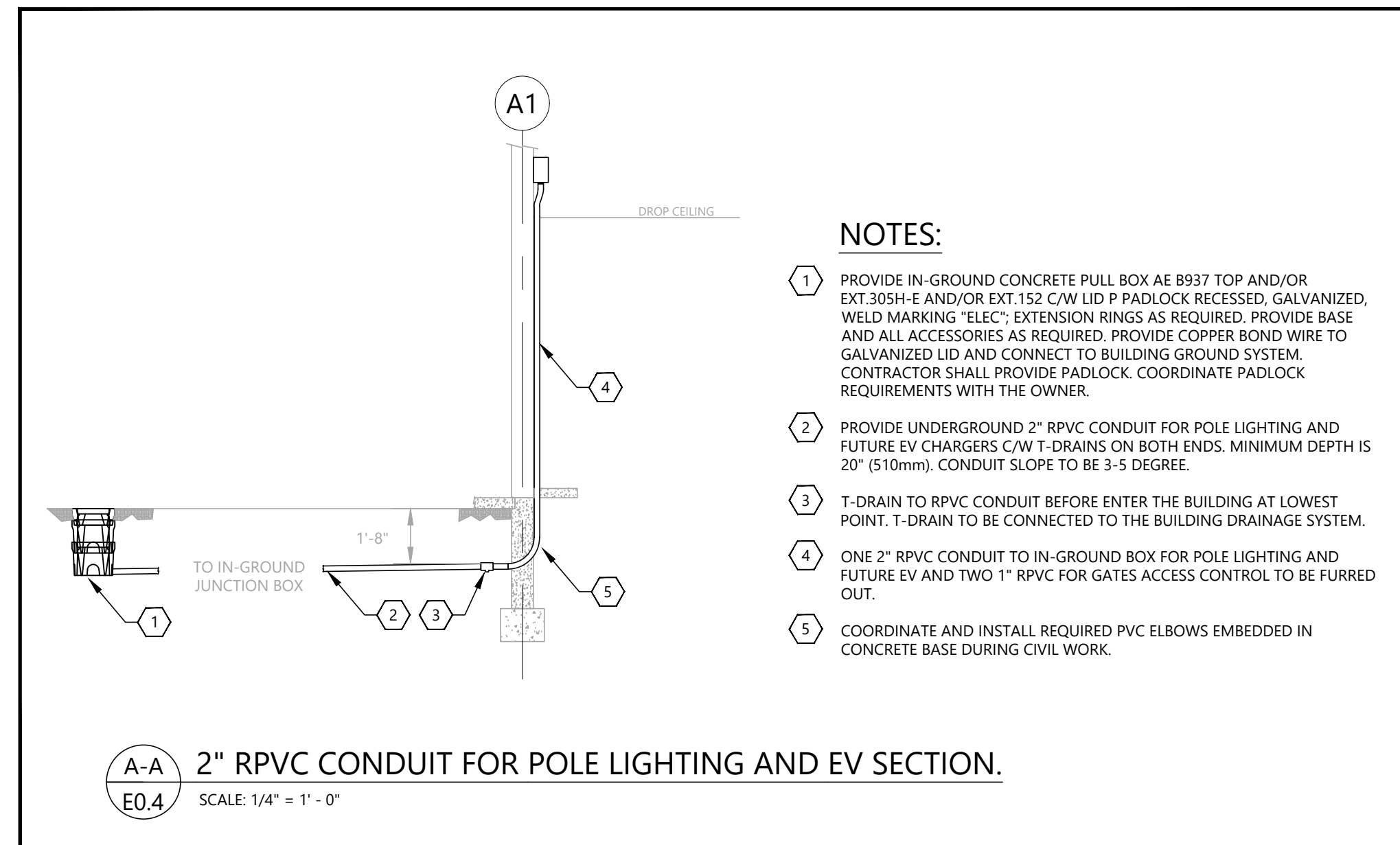
PROJECT:

Q-KIDS DAYCARE CENTRE

420 Webster Avenue
Quesnel, BC

DRAWING:

MECHANICAL AND PANEL SCHEDULES



9		
8		
7		
6		
5		
4		
3	ISSUED FOR BUILDING PERMIT AND TENDER ONLY	JUN 15/22
2	ISSUED FOR PRE-TENDER REVIEW ONLY	JUN 10/22
1	ISSUED FOR REVIEW	SEP 29/21
NO.	REVISIONS	DATE

ELECTRICAL CONSULTANT:



HARBOURFRONT BUSINESS CENTRE
SUITE 500 - 224 WEST ESPLANADE
NORTH VANCOUVER, BC, V7M 1A4
778.997.5175 <https://alegowest.ca>

THIS DRAWING AND ALL ASSOCIATED DOCUMENTS ARE AN INSTRUMENT OF SERVICE. ALL RIGHTS REMAIN EXCLUSIVE PROPERTY OF ALEGO WEST AND MAY NOT BE USED OR REPRODUCED FOR ANY REASON WITHOUT THE WRITTEN CONSENT OF ALEGO WEST.
COPYRIGHT OF THIS DRAWING, ITS CONTENT AND DESIGN ARE RESERVED BY ALEGO WEST. ANY USE OF THIS DRAWING, RELIANCE ON THE DRAWING, OR DECISIONS BASED UPON THE DRAWING, BY THIRD PARTY ARE THE RESPONSIBILITY OF THOSE THIRD PARTIES UNLESS AUTHORIZED BY ALEGO WEST. THE CITY OF QUESNEL HAS COPYRIGHT PERMISSION FOR REPRODUCTION AND DISTRIBUTION OF THIS DRAWING. DO NOT SCALE THIS DRAWING.

PROJECT:

Q-KIDS DAYCARE CENTRE

420 Webster Avenue
Quesnel, BC

DRAWING:
DETAILS

PROJECT NO.:	CHECKED BY:
2108	A.G.
DATE:	SCALE:
JULY 26, 2021	AS SHOWN

DRAWING NO.:

E2.3

FIRE ALARM DEVICE MOUNTING HEIGHTS:

MANUAL PULL STATION: 1050 MM - 1150 MM ABOVE THE FINISHED FLOOR LEVEL MEASURED FROM THE CENTRE OF THE MANUAL STATION (FROM THE CENTRE OF BACKBOX).

AUDIBLE SIGNAL DEVICES: THE TOP OF THE DEVICE SHALL NOT BE LESS THAN 2300 MM ABOVE THE FINISHED FLOOR LEVEL, WHERE CEILING HEIGHTS ALLOW; WALL MOUNTED AUDIBLE SIGNAL DEVICES SHALL BE INSTALLED AT LEAST 150 MM BELOW THE CEILING, MEASURED TO THE TOP EDGE OF THE DEVICE.

VISUAL SIGNAL DEVICES: WALL-MOUNTED STROBE LIGHT ENTIRE LENS IS NOT LESS THAN 2000 MM AND NOT MORE THAN 2400 MM ABOVE THE FINISHED FLOOR LEVEL.

THE VISUAL DISPLAYS AND OPERATING CONTROLS OF THE ANNUNCIATOR(S) AND MAIN CONTROL PANEL SHALL BE NOT LESS THAN 600 MM AND NOT MORE THAN 1800 MM ABOVE THE FINISHED FLOOR LEVEL.

REFER TO CAN/ULC-5524-2019 FOR EXACT REQUIREMENTS AND INSTALLATION.

FIRE ALARM DIGITAL DUAL COMMUNICATING TRANSMITTER:

INSTALLER TO ARRANGE FOR COORDINATE INSTALLATION AND CONNECTION OF FIRE ALARM DIGITAL ALARM DUAL COMMUNICATIONS SIGNAL TRANSMITTING UNIT TO REMOTE N.F.P.A. APPROVED CENTRAL DEDICATED ULC LISTED MONITORING AGENCY.

INSTALLER SHALL SUPPLY AND INSTALL ALL NECESSARY DEVICES AND WIRING TO ALLOW FOR CORRECT MONITORING OF:

- FIRE ALARM SIGNAL
- FIRE ALARM TROUBLE SIGNAL
- CARBON MONOXIDE TROUBLE SIGNAL

DEVICES SHALL INCLUDE BUT NOT LIMITED TO FIRE ALARM PANEL, ALL NECESSARY ADDITIONAL MODULES, RELAYS, DIGITAL ALARM COMMUNICATING TRANSMITTER, ULC-LISTED TRANSPONDER AND RECEPTACLE ON DEDICATED CIRCUIT. PROVIDE SILENT KNIGHT MODEL #51048 FIRE CONTROL COMMUNICATOR OR APPROVED ULC LISTED EQUAL ACCEPTABLE TO AUTHORITY HAVING JURISDICTION.

BREAKER FOR DIGITAL ALARM COMMUNICATING TRANSMITTER TO BE PAINTED RED c/w LAMICCID LABEL TO READ "FIRE ALARM DIGITAL ALARM COMMUNICATING TRANSMITTER - DO NOT OPERATE EXCEPT TO TEST"

INSTALLER TO ENSURE DIGITAL ALARM COMMUNICATING TRANSMITTER IS TESTED AND INSPECTED DURING THE FIRE ALARM VERIFICATION AND IS REPORTED ON THE WORKSHEETS. COORDINATE WITH MONITORING COMPANY TO ENSURE THAT THEY SUBMIT LETTER TO ENGINEER CONFIRMING THAT ALL SIGNALS NOTED ABOVE ARE BEING RECEIVED, THAT THEY ARE A ULC-LISTED COMPANY AND THAT ALL DEVICES USED ARE ULC APPROVED.

ALL WIRING BETWEEN A FIRE ALARM CONTROL PANEL AND DUAL AUTO-DIALER, AND BETWEEN DUAL AUTO-DIALER AND TELEPHONE SERVICE BOX SHALL BE MECHANICALLY PROTECTED, IN METAL RACEWAY (EMT, FLEX OR WIREMOLD 500/700 SERIES); A MINIMUM SIZE OF WIRING IS #18 AWG, THE INSTALLATION IS AS PER CAN/ULC-5561-13 (R2018), CAN/ULC-5524-2019, CEC AND AUTO-DIALER INSTALLATION MANUAL.

FIRE ALARM SYSTEM DESCRIPTION:

SINGLE STAGE SYSTEM SHALL SUPERVISE WIRING, ANNUNCIATOR(S), EQUIPMENT AND DEVICES FOR ALARM INITIATION, ANNUNCIATION, AND AUDIBLE SIGNALING CONTINUOUSLY FOR OPENS, SHORTS OR GROUNDS (TROUBLE). PROVIDE EACH ALARM INITIATING DEVICE CIRCUIT WITH ILLUMINATED AND AUDIBLE ANNUNCIATION OF BOTH TROUBLE SUPERVISORY AND ALARM CONDITIONS. NON-ILLUMINATION SHALL INDICATE A NORMAL CONDITION.

SYSTEM SHALL NOT INCORPORATE A TIME DELAY FOR ANY OF THE ALARM INITIATING DEVICES. ALL ALARMS TO BE CONSIDERED AS CONFIRMED ALARM.

ACCOMPLISH DETECTION AND REPORTING OF FIRE CONDITIONS BY THE FOLLOWING BASIC METHODS:

1. MANUAL STATIONS
2. SMOKE DETECTORS
3. DUCT SMOKE DETECTORS
4. HEAT DETECTORS
5. CARBON MONOXIDE DETECTORS

SUBDIVIDE FIRE ALARM SYSTEM INPUTS FURTHER AS FOLLOWS, FOR A MORE DEFINED INDICATION OF LOCATIONS AND NATURE OF THE FIRE ALARM OR TROUBLE CONDITIONS:

1. MANUAL STATION BY ADDRESS AND LOCATION (ROOM NAME AND NUMBER)
2. SMOKE AND/OR HEAT DETECTOR BY ADDRESS AND LOCATION (ROOM NAME AND NUMBER)
3. CARBON MONOXIDE DETECTORS BY ADDRESS AND LOCATION

ALARM CONDITION TO OVERRIDE TROUBLE INDICATION, TROUBLE INDICATION TO RE-APPEAR AFTER ALARM RESET.

FIRE ALARM ZONES SHALL BE AS SHOWN ON FIRE ALARM ZONE SCHEDULE.

SELECTIVE MANUAL TESTING OF ANY DEVICE POINT IN THE SYSTEM TO DETERMINE NORMAL, TROUBLE OR ALARM STATUS.

REMOTE ANNUNCIATOR(S) TO DUPLICATE ANNUNCIATION FROM THE MAIN FIRE ALARM PANEL. SYSTEM SHALL BE CAPABLE OF MANUAL OPERATION IN THE EVENT OF CENTRAL PROCESSOR MALFUNCTION. SUPPLIER SHALL INCLUDE A STATEMENT IN THE SYSTEM SHOP DRAWING SUBMITTAL EXPLAINING THE MANUAL OPERATING CAPABILITY OF THE SYSTEM. PROVIDE REDUNDANT PROCESSOR TO DUPLICATE PRIMARY PROCESSOR FUNCTION.

SEQUENCE OF OPERATION UNDER ALARM CONDITION:

1. ACTUATION OF ANY ALARM INITIATING DEVICE TO:
 1. CAUSE ELECTRONIC LATCH TO LOCK-IN ALARM STATE AT MAIN CONTROL PANEL.
 2. INDICATE ZONE OF ALARM AT MAIN CONTROL PANEL AND REMOTE ANNUNCIATOR.
 3. CAUSE AUDIBLE SIGNALING DEVICES TO SOUND CONTINUOUSLY THROUGHOUT BUILDING.
 4. TRANSMIT SIGNAL TO FIRE DEPARTMENT VIA ULC-LISTED MONITORING STATION.
 5. CAUSE AIR CONDITIONING AND VENTILATION FANS TO SHUT DOWN OR TO FUNCTION TO PROVIDE REQUIRED CONTROL OF SMOKE MOVEMENT (IF EQUIPPED).
2. ACKNOWLEDGING ALARM: INDICATED AT MAIN CONTROL PANEL.
3. POSSIBLE TO SILENCE SIGNALS BY "ALARM SILENCE" SWITCH AT MAIN CONTROL PANEL, AFTER 60S PERIOD OF OPERATION.
4. SUBSEQUENT ALARM, RECEIVED AFTER PREVIOUS ALARM HAS BEEN SILENCED, TO RE-ACTIVATE SIGNALS.

SEQUENCE OF OPERATION UNDER ACTUATION OF CARBON MONOXIDE DETECTOR CONDITION:

- AUDIBLE SIGNALS INITIATED BY CARBON MONOXIDE DETECTOR SHALL BE A LOCALIZED TEMPORAL 4 PATTERN AS SPECIFIED IN CAN/ULC-5588-2017 STANDARD FOR GAS AND VAPOUR DETECTORS AND SENSORS.
- SIGNALS GENERATED BY CARBON MONOXIDE DETECTION DEVICES SHALL ACTIVATE A DISTINCTIVE CARBON MONOXIDE EVENT NOTIFICATION (REQUIRING ACKNOWLEDGEMENT) TO THE BUILDING OPERATOR VIA THE FIRE ALARM CONTROL UNIT.
- AN END-OF-LIFE SIGNAL FROM CARBON MONOXIDE DETECTOR SHALL INITIATE A TROUBLE SIGNAL AT THE CONTROL UNIT.
- EMERGENCY POWER SUPPLY SHALL PROVIDE NOT LESS THAN 12 HOURS OF CARBON MONOXIDE SIGNALING IN ADDITIONAL TO THE REQUIREMENTS OF THE FIRE ALARM SIGNALING 24 HOURS OF STANDBY LOAD PLUS THE DURATION OF RATED ALARM LOAD AS REQUIRED BY BC-CC-2018, UNLESS THE SYSTEM MONITORED BY A FIRE SIGNAL RECEIVING CENTRE WITH EMERGENCY RESPONSE.

5. ACTIVATION OF ANY CARBON MONOXIDE DETECTORS SHALL:

1. CAUSE LOCALIZED AUDIBLE SIGNAL (ACTIVATE SOLINDER BASE) WITHIN THE AFFECTED AREA TO OPERATE;
2. NOT GENERATE SIGNALS THROUGHOUT THE BUILDING; AND
3. PROVIDE A LOCAL AUDIBLE INDICATION, AND A VISIBLE INDICATION THAT DESCRIBES THE PHYSICAL LOCATION OF THE ACTIVATED CARBON MONOXIDE DETECTOR ON THE FIRE ALARM ANNUNCIATOR AND CONTROL PANEL;
4. NOTIFY THE FIRE SIGNAL RECEIVING CENTRE THAT A CARBON MONOXIDE SIGNAL HAS BEEN ACTIVATED.

SEQUENCE OF OPERATION UNDER TROUBLE CONDITION:

6. TROUBLE ON SYSTEM TO:
 1. INDICATE CIRCUIT IN TROUBLE AT MAIN CONTROL PANEL.
 2. ACTIVATE "SYSTEM TROUBLE" INDICATION, BUZZER AND COMMON TROUBLE SEQUENCE.
8. ACKNOWLEDGING TROUBLE CONDITION TO SILENCE AUDIBLE INDICATION; WHEREAS VISUAL INDICATION TO REMAIN UNTIL TROUBLE IS CLEARED AND SYSTEM IS BACK TO NORMAL.
9. TROUBLE ON SYSTEM: SUPPRESSED DURING COURSE OF ALARM.
10. TROUBLE CONDITION ON ANY CIRCUIT IN SYSTEM NOT TO INITIATE ALARM CONDITIONS.

FIRE ALARM ZONE SCHEDULE			
FIRE ALARM ZONE	DESCRIPTION	DEVICES	SIGNAL TYPE
1	BASEMENT MECHANICAL / STORAGE	PULL STATION, HEAT & SMOKE DETECTORS	ALARM
2	STAIRWAY	SMOKE DETECTOR	ALARM
3	MAIN FLOOR	PULL STATIONS, HEAT & SMOKE DETECTORS	ALARM
4	SPARE	-	-
5	SPARE	-	-

NOTES:
1. THE SECURITY MONITORING COMPANY IS TELUS.
2. THE CITY OF QUESNEL HAS SELECTED TELUS AS ULC LISTED FIRE ALARM MONITORING COMPANY. SUPPLY AND INSTALL COST TO BE INCLUDED IN BID PRICE. CONTACT TELUS SECURITY FOR DETAILS.

9		
8		
7		
6		
5		
4	ISSUED FOR BUILDING PERMIT AND TENDER ONLY	JUN 15/22
3	ISSUED FOR PRE-TENDER REVIEW ONLY	JUN 10/22
2	ISSUED FOR REVIEW	SEP 29/21
1	ISSUED FOR COORDINATION	JUL 26/21
NO.	REVISIONS	DATE

ELECTRICAL CONSULTANT:



HARBOURFRONT BUSINESS CENTRE
SUITE 500 - 224 WEST ESPLANADE
NORTH VANCOUVER, BC, V7M 1A4
778.997.5175 https://alegowest.ca

THIS DRAWING AND ALL ASSOCIATED DOCUMENTS ARE AN INSTRUMENT OF SERVICE AT ALL TIMES REMAINING EXCLUSIVE PROPERTY OF ALEGO WEST AND MAY NOT BE USED OR REPRODUCED FOR ANY REASON WITHOUT THE WRITTEN PERMISSION OF ALEGO WEST. COPYRIGHT OF THIS DRAWING, ITS CONTENT AND DESIGN ARE RESERVED BY ALEGO WEST. ANY USE OF THIS DRAWING, RELIANCE ON THE DRAWING OR DECISIONS BASED UPON THE DRAWING, BY THIRD PARTY ARE THE RESPONSIBILITY OF THOSE THIRD PARTIES UNLESS AUTHORIZED BY ALEGO WEST. THE CITY OF QUESNEL HAS GRANTED PERMISSION FOR REPRODUCTION AND DISTRIBUTION OF THIS DRAWING, DO NOT SCALE THIS DRAWING.

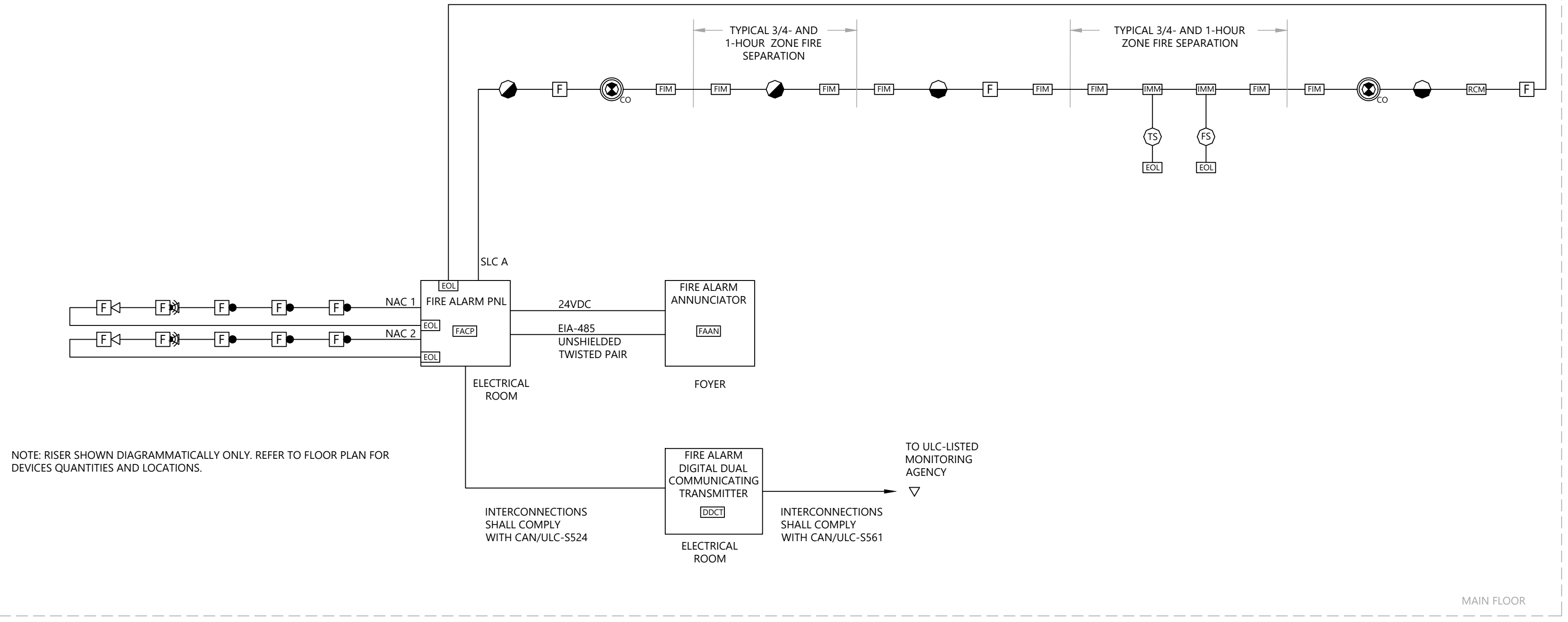
PROJECT:
Q-KIDS DAYCARE CENTRE

420 Webster Avenue
Quesnel, BC

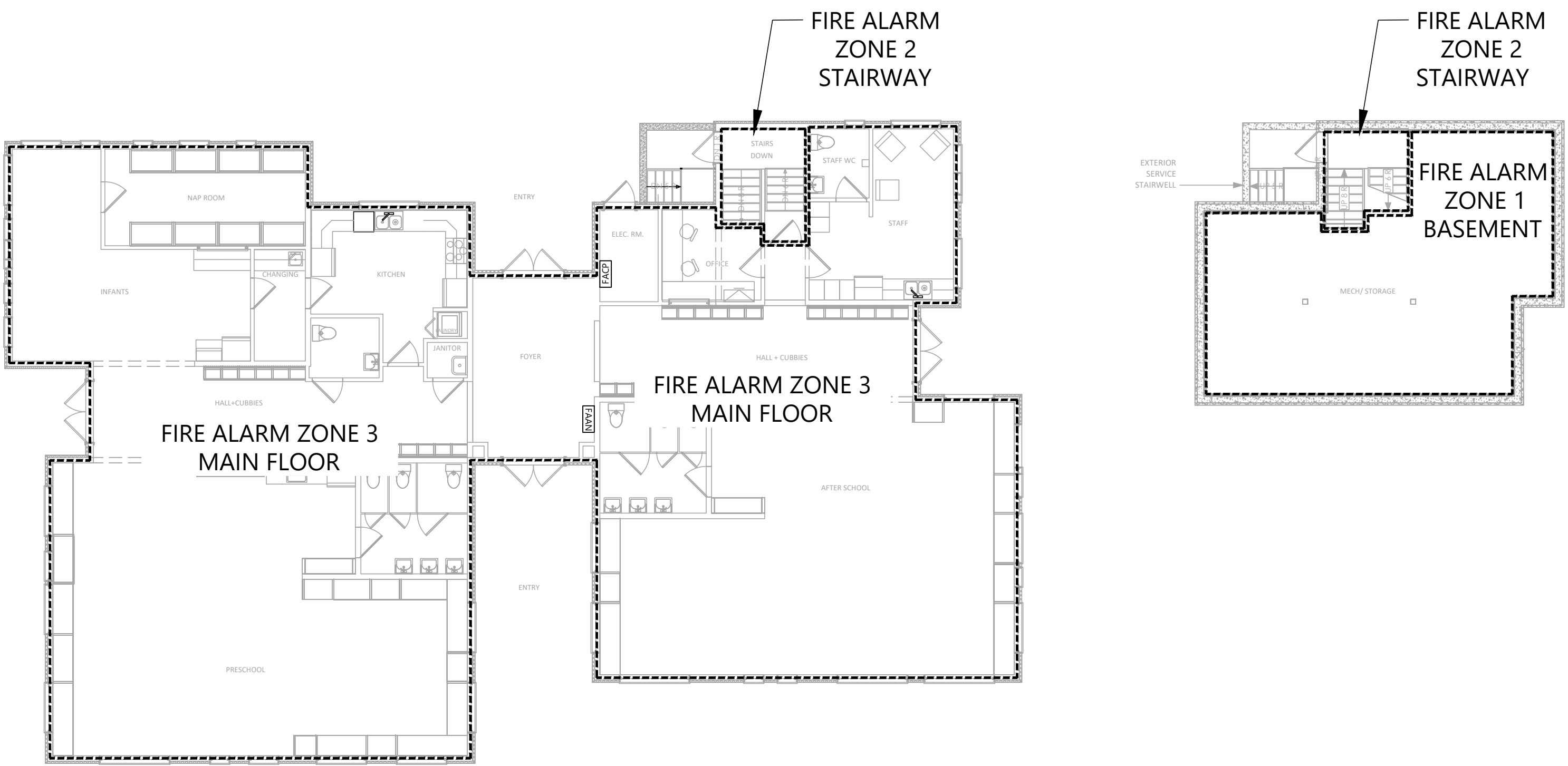
DRAWING:
FIRE ALARM RISER

PROJECT NO.: 2108	CHECKED BY: A.G.
DATE: JULY 26, 2021	SCALE: N.T.S.

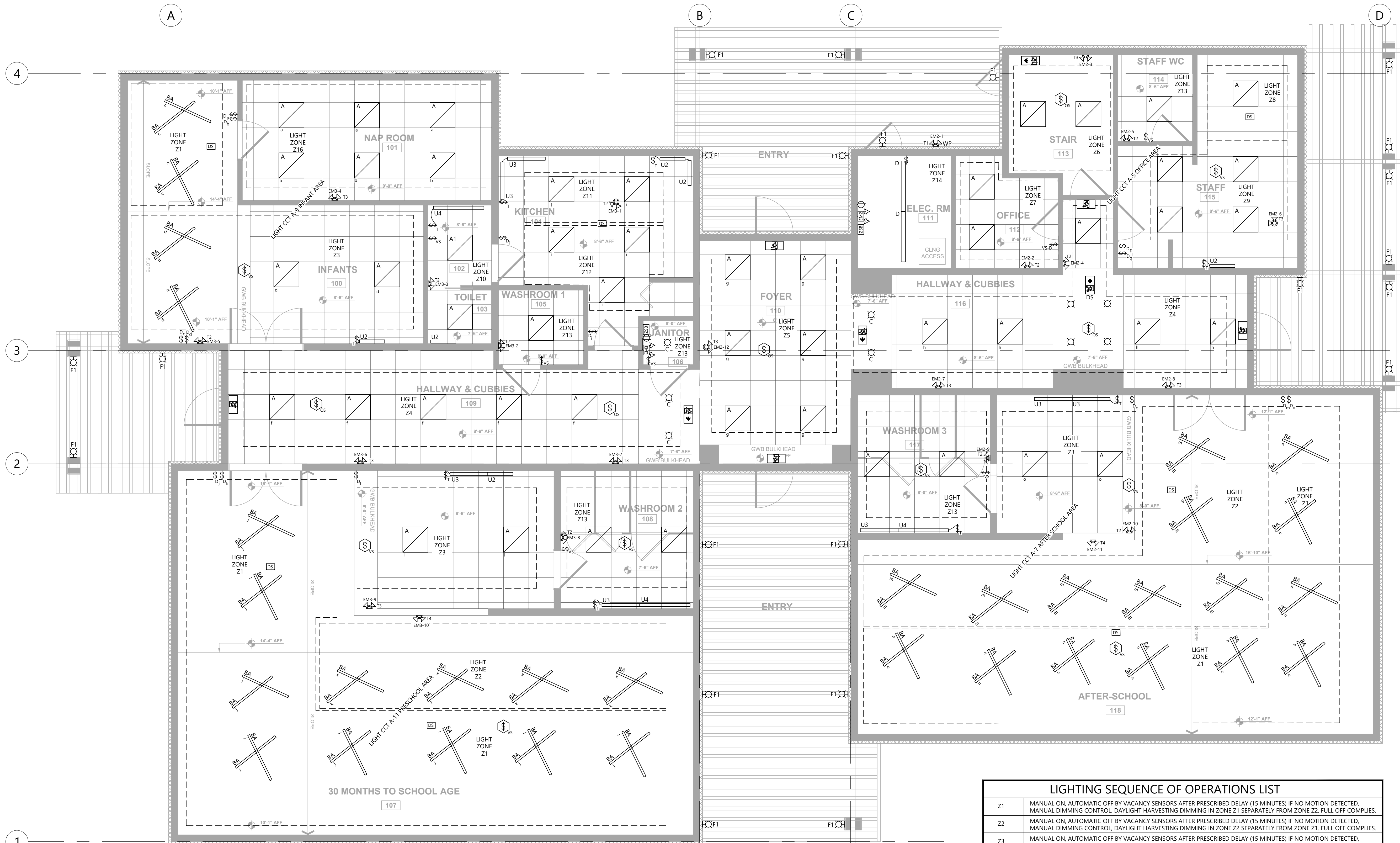
E2.4



PROPOSED FIRE ALARM RISER DIAGRAM
N.T.S.



PROPOSED FIRE ALARM ZONE MAP
N.T.S.



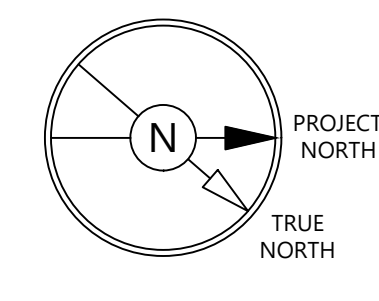
9		
8		
7		
6		
5		
4	ISSUED FOR BUILDING PERMIT AND TENDER ONLY	JUN 15/22
3	ISSUED FOR PRE-TENDER REVIEW ONLY	JUN 10/22
2	ISSUED FOR REVIEW	SEP 29/21
1	ISSUED FOR COORDINATION	JUL 26/21
NO.	REVISIONS	DATE

ELECTRICAL CONSULTANT:



HARBOURFRONT BUSINESS CENTRE
SUITE 500 - 224 WEST ESPLANADE
NORTH VANCOUVER, BC, V7M 1A4
778.997.5175 https://alegowest.ca

THIS DRAWING AND ALL ASSOCIATED DOCUMENTS ARE AN INSTRUMENT OF SERVICE AND ALL RIGHTS REMAIN EXCLUSIVE PROPERTY OF ALEGO WEST AND MAY NOT BE USED OR REPRODUCED FOR ANY REASON WITHOUT THE WRITTEN PERMISSION OF ALEGO WEST. COPYRIGHT OF THIS DRAWING, ITS CONTENT AND DESIGN ARE RESERVED BY ALEGO WEST. ANY USE OF THIS DRAWING, RELIANCE ON THE DRAWING, OR DECISIONS BASED UPON THE DRAWING, BY THIRD PARTY ARE THE RESPONSIBILITY OF THOSE THIRD PARTIES UNLESS AUTHORIZED BY ALEGO WEST. THE CITY OF QUESNEL HAS GRANTED PERMISSION FOR REPRODUCTION AND DISTRIBUTION OF THIS DRAWING. DO NOT SCALE THIS DRAWING.



PROJECT:
Q-KIDS DAYCARE CENTRE

420 Webster Avenue
Quesnel, BC

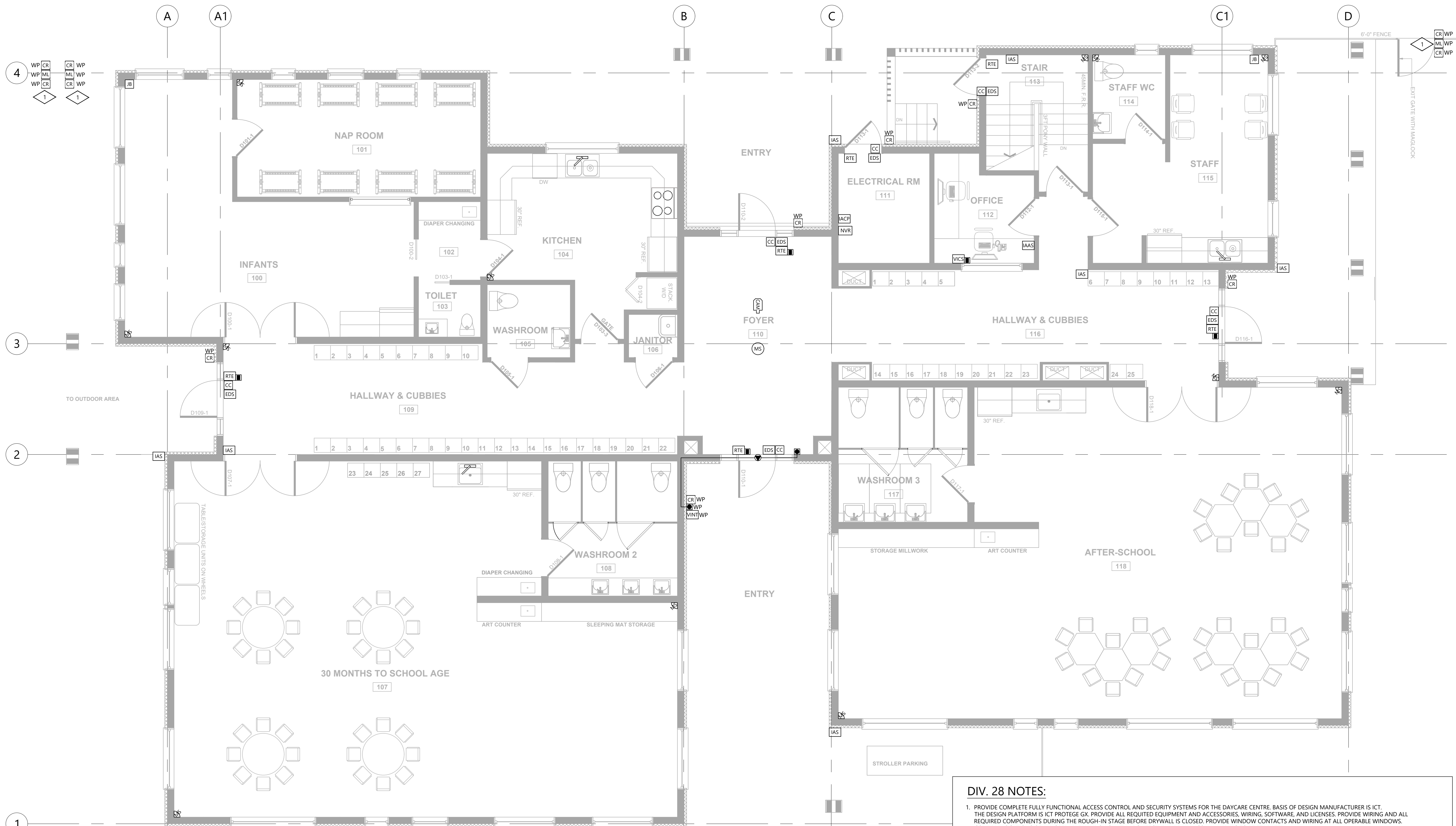
DRAWING:
REFLECTED CEILING PLAN

PROJECT NO.: 2108	CHECKED BY: A.G.
DATE: JULY 26, 2021	SCALE: 1/4" = 1' - 0"

DRAWING NO.:

E3.0

LIGHTING SEQUENCE OF OPERATIONS LIST	
Z1	MANUAL ON, AUTOMATIC OFF BY VACANCY SENSORS AFTER PRESCRIBED DELAY (15 MINUTES) IF NO MOTION DETECTED, MANUAL DIMMING CONTROL, DAYLIGHT HARVESTING DIMMING IN ZONE Z1 SEPARATELY FROM ZONE Z2. FULL OFF COMPLIES.
Z2	MANUAL ON, AUTOMATIC OFF BY VACANCY SENSORS AFTER PRESCRIBED DELAY (15 MINUTES) IF NO MOTION DETECTED, MANUAL DIMMING CONTROL, DAYLIGHT HARVESTING DIMMING IN ZONE Z2 SEPARATELY FROM ZONE Z1. FULL OFF COMPLIES.
Z3	MANUAL ON, AUTOMATIC OFF BY VACANCY SENSORS AFTER PRESCRIBED DELAY (15 MINUTES) IF NO MOTION DETECTED, MANUAL DIMMING CONTROL. FULL OFF COMPLIES.
Z4	MANUAL ON, AUTOMATIC PARTIAL 50% OFF BY OCCUPANCY SENSORS AFTER PRESCRIBED DELAY (15 MINUTES) IF NO MOTION DETECTED, MANUAL DIMMING CONTROL. SCHEDULED SHUT OFF. FULL OFF COMPLIES.
Z5	MANUAL ON, AUTOMATIC PARTIAL 50% OFF BY OCCUPANCY SENSORS AFTER PRESCRIBED DELAY (15 MINUTES) IF NO MOTION DETECTED, MANUAL DIMMING CONTROL. SCHEDULED SHUT OFF. FULL OFF COMPLIES.
Z6	AUTOMATIC PARTIAL 50% OFF BY OCCUPANCY SENSORS AFTER PRESCRIBED DELAY (10 MINUTES) IF NO MOTION DETECTED.
Z7	MANUAL ON, AUTOMATIC OFF BY VACANCY SENSORS AFTER PRESCRIBED DELAY (10 MINUTES) IF NO MOTION DETECTED, MANUAL DIMMING CONTROL. FULL OFF COMPLIES.
Z8	MANUAL ON, AUTOMATIC OFF BY VACANCY SENSORS AFTER PRESCRIBED DELAY (10 MINUTES) IF NO MOTION DETECTED, MANUAL DIMMING CONTROL, DAYLIGHT HARVESTING DIMMING. FULL OFF COMPLIES.
Z9	MANUAL ON, AUTOMATIC OFF BY VACANCY SENSORS AFTER PRESCRIBED DELAY (10 MINUTES) IF NO MOTION DETECTED, MANUAL DIMMING CONTROL. FULL OFF COMPLIES.
Z10	MANUAL ON, AUTOMATIC OFF BY VACANCY SENSORS AFTER PRESCRIBED DELAY (10 MINUTES) IF NO MOTION DETECTED, MANUAL DIMMING CONTROL. FULL OFF COMPLIES.
Z11	MANUAL ON, AUTOMATIC OFF BY VACANCY SENSORS AFTER PRESCRIBED DELAY (10 MINUTES) IF NO MOTION DETECTED, MANUAL DIMMING CONTROL, DAYLIGHT HARVESTING DIMMING. FULL OFF COMPLIES.
Z12	MANUAL ON, AUTOMATIC OFF BY VACANCY SENSORS AFTER PRESCRIBED DELAY (10 MINUTES) IF NO MOTION DETECTED, MANUAL DIMMING CONTROL. FULL OFF COMPLIES.
Z13	MANUAL ON, AUTOMATIC OFF BY VACANCY SENSORS AFTER PRESCRIBED DELAY (20 MINUTES) IF NO MOTION DETECTED, MANUAL DIMMING CONTROL. FULL OFF COMPLIES.
Z14	MANUAL ON, MANUAL OFF. MECHANICAL AND ELECTRICAL ROOMS.
Z15	MANUAL ON, AUTOMATIC OFF BY VACANCY SENSORS AFTER PRESCRIBED DELAY (15 MINUTES) IF NO MOTION DETECTED, FULL OFF COMPLIES.
Z16	MANUAL ON, MANUAL OFF, MANUAL DIMMING CONTROL. FULL OFF COMPLIES.



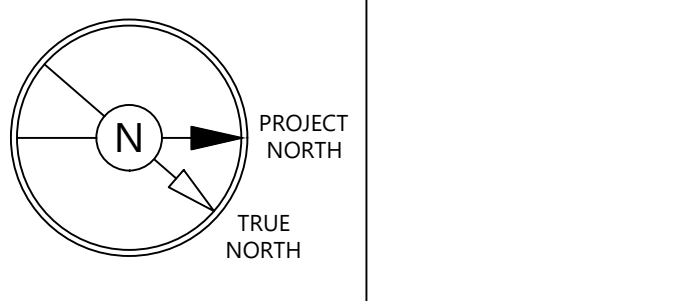
9		
8		
7		
6		
5		
4	ISSUED FOR BUILDING PERMIT AND TENDER ONLY	JUN 15/22
3	ISSUED FOR PRE-TENDER REVIEW ONLY	JUN 10/22
2	ISSUED FOR REVIEW	SEP 29/21
1	ISSUED FOR COORDINATION	JUL 26/21
NO.	REVISIONS	DATE

ELECTRICAL CONSULTANT:

ALEGO WEST

HARBOURFRONT BUSINESS CENTRE
SUITE 500 - 224 WEST ESPLANADE
NORTH VANCOUVER, BC, V7M 1A4
778.997.5175 <https://alegowest.ca>

THIS DRAWING AND ALL ASSOCIATED DOCUMENTS ARE AN INSTRUMENT OF SERVICE. ALL RIGHTS REMAIN EXCLUSIVE PROPERTY OF ALEGO WEST AND MAY NOT BE USED OR REPRODUCED FOR ANY REASON WITHOUT THE WRITTEN PERMISSION OF ALEGO WEST. ANY USE OF THIS DRAWING, RELIANCE ON THE DRAWING, OR RECORDS BASED UPON THE DRAWING, BY THIRD PARTY ARE THE RESPONSIBILITY OF THOSE THIRD PARTIES UNLESS AUTHORIZED BY ALEGO WEST. THE CITY OF QUESNEL HAS COPYRIGHT PERMISSION FOR REPRODUCTION AND DISTRIBUTION OF THIS DRAWING. DO NOT SCALE THIS DRAWING.



PROJECT:
Q-KIDS DAYCARE CENTRE

**420 Webster Avenue
Quesnel, BC**

DRAWING:
POWER PLAN

PROJECT NO.: 2108	CHECKED BY: A.G.
DATE: JULY 26, 2021	SCALE: 1/4" = 1' - 0"

DRAWING NO.:
E4.0

KEY NOTES:

1 REFER TO ARCHITECTURAL DRAWINGS FOR EXACT LOCATIONS OF GATES WITH MAGLOCKS. MAGLOCK AT GATE CONNECTED TO FIRE ALARM. REFER TO DRAWING E0.4 AND DRAWING E2.3 FOR DETAILS. COORDINATE INSTALLATION OF UNDERGROUND PVC CONDUIT TO GATE POLE WITH FENCE CONTRACTOR. ALL EXTERIOR PULL BOXES AND/OR JUNCTION BOXES TO BE INSTALLED ON PROTECTED SIDE OF THE GATE.

- DIV. 28 NOTES:**
- PROVIDE COMPLETE FULLY FUNCTIONAL ACCESS CONTROL AND SECURITY SYSTEMS FOR THE DAYCARE CENTRE. BASIS OF DESIGN MANUFACTURER IS ICT. THE DESIGN PLATFORM IS ICT PROTEGE GX. PROVIDE ALL REQUIRED EQUIPMENT AND ACCESSORIES, WIRING, SOFTWARE, AND LICENSES. PROVIDE WIRING AND ALL REQUIRED COMPONENTS DURING THE ROUGH-IN STAGE BEFORE DRYWALL IS CLOSED. PROVIDE WINDOW CONTACTS AND WIRING AT ALL OPERABLE WINDOWS. CONFIRM LOCATIONS OF ALL OPERABLE WINDOWS WITH ARCHITECTURAL DRAWINGS. ALL WIRING TO BE FT4 RATED.
 - PROVIDE VIDEO INTERCOM SYSTEM AIPHONE JF SERIES WITH JF-DV VIDEO DOOR STATION. ONE JF-2MED VIDEO MASTER STATION IN OFFICE 112. PROVIDE DEDICATED P5-1820UL POWER SUPPLY. QUANTITY OF POWER SUPPLIES IS AS REQUIRED. VIDEO IMAGE ALSO TO BE CONNECTED TO VIDEO SURVEILLANCE SYSTEM AND RECORDED ON NVR NOT LESS THAN 16 DAYS.
 - VIDEO SURVEILLANCE SYSTEM SHALL BE IP BASED. C/W 1080P CAMERAS. NVR IS REQUIRED. VIDEO SURVEILLANCE SYSTEM CAMERA SHALL BE AVIGILON 2.0MP OR EQUAL. CAMERA SHALL BE SUPPLIED AND INSTALLED BY VIDEO SURVEILLANCE CONTRACTOR. CONTRACTOR IS TO PROVIDE REQUIRED BACK BOXES IN LOCATIONS AS INDICATED ON THIS DRAWING. CAT.6 CABLES. CABLES TO BE LABELED AND TERMINATED ON PATCH PANEL IN THE ELECTRICAL ROOM. LABELED AND TERMINATED IN EACH BACK BOX WITH A MINIMUM 9-INCH SLACK AND MALE CAT.6 CABLE CONNECTOR. PROVIDE CABLE TEST RESULTS FOR REVIEW.
 - ACCESS CONTROL SYSTEM SHALL USE PROXIMITY TECHNOLOGY.
 - PROVIDE COMPLETE RACEWAY SYSTEM FOR ACCESS CONTROL AND SECURITY SYSTEM WITH OUTLET BOXES, BACK BOXES, CONDUIT AND CAT.6 WIRING AS REQUIRED. ALL JUNCTION AND PULL BOXES SHALL BE ON MOUNTED ON SECURE SIDE ONLY. ALL OUTLETS SHALL BE 4"x4" (103 MMx103 MM) DEEP BOXES COMPLETED WITH A SINGLE GANG MUD RING AND SINGLE GANG COVER PLATE. PROVIDE PULL STRINGS IN ALL CONDUITS. CONDUITS SHALL BE 3/4" (19 MM) MINIMUM.
 - PROVIDE CAT.6 CABLING FOR FOUR WIRELESS ACCESS POINTS, TELEPHONE AND DATA OUTLETS AS INDICATED ON THE DRAWINGS.
 - PROVIDE CABLING FOR THE ACCESS CONTROL AND SECURITY SYSTEM AS REQUIRED.
 - SUBMIT SHOP DRAWINGS FOR REVIEW BEFORE TO PLACE ORDER.
 - PROVIDE ONE-YEAR WARRANTY FOR MATERIAL AND LABOUR. INCLUDE MANUFACTURER'S WARRANTY FOR ALL EQUIPMENT IN THE OPERATIONS AND MAINTENANCE MANUALS.
 - ALL DEVICES AND WIRING SHALL BE APPROVED BY ULC, CSA OR OTHER ACCREDITED CERTIFICATION AGENCY RECOGNIZED BY THE AUTHORITY HAVING JURISDICTION.
 - AS PER THE CITY OF QUESNEL PRE-APPROVED ACCESS CONTROL AND SECURITY CONTRACTOR IS TELUS SECURITY. CONTRACTOR IS CONTACT TO TELUS SECURITY FOR COORDINATION AND ADDITIONAL REQUIREMENTS FOR EQUIPMENT AND RACEWAY INSTALLATION.

